



A dark blue horizontal band at the top of the page contains a topographic map with contour lines and several small white icons representing buildings or structures.

# Secure your File Geodatabase

A light gray decorative graphic at the bottom of the page, consisting of several wavy, overlapping lines that resemble a topographic map's contour lines.

PT Esri Indonesia | Menara 165, 6th Floor Unit B, Jalan TB Simatupang Kav 1, Jakarta Selatan 12560

 +62 (21) 2940 6355  [connect@esriindonesia.co.id](mailto:connect@esriindonesia.co.id)  [esriindonesia.co.id](http://esriindonesia.co.id)

## License a file geodatabase

---

You can share data in a file geodatabase with other people and apply a licence that determines the length of time they can use the data or whether they can export feature classes.

For example, if you are a professor and want to provide data to your students for one semester, you can give the students a file geodatabase containing data licensed to expire at the end of the semester. Or, if you hire a contractor to analyse a set of data but you don't want the contractor to export the data, you can provide the contractor with a file geodatabase that is licensed to prevent data exports.

To achieve this, do the following:

- » Create a file geodatabase
- » Load the data you want to restrict using a licence
- » Designate the file geodatabase as licensed and generate a licence definition file
- » Generate a licence file
- » Apply the licence to an ArcGIS client

Please note the following information about licensed file geodatabases and client releases:

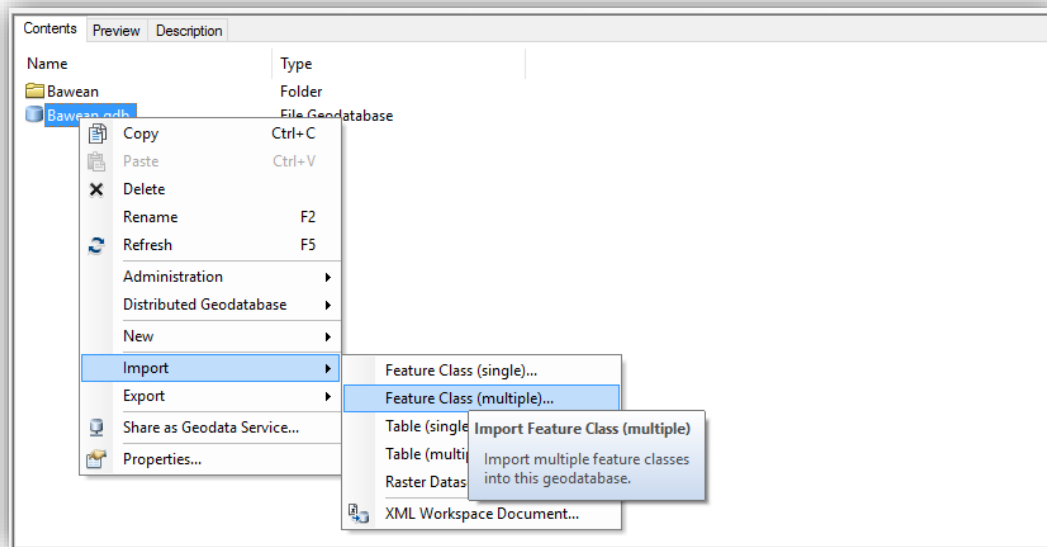
- » You can license ArcGIS 10.0 or later releases' uncompressed geodatabases using an ArcGIS 10.3 client or versions onwards
- » ArcGIS 10.1 and newer release clients can consume licensed file geodatabases, so be sure the person you're sending the file geodatabase to has at least ArcGIS 10.1

### Load restricted-use data

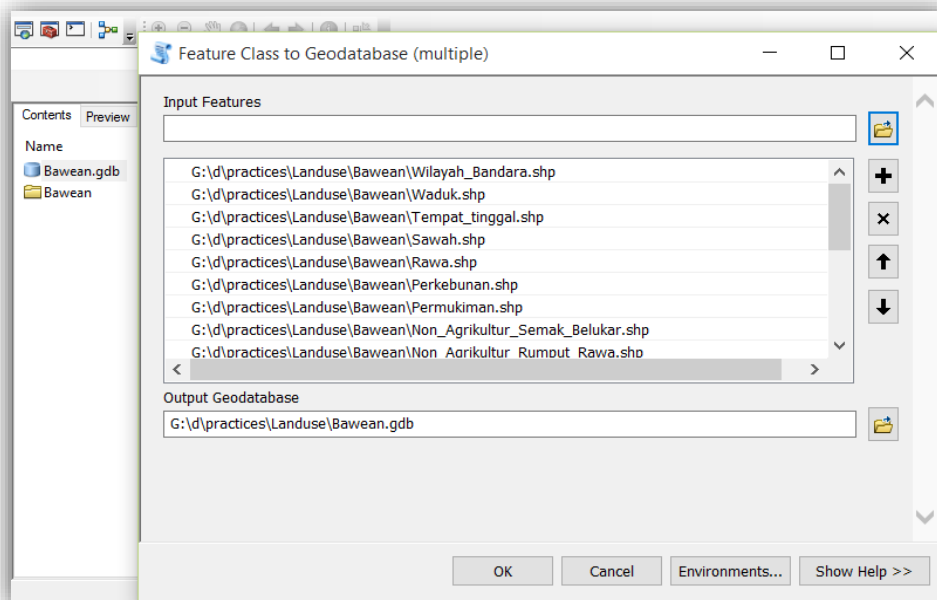
Load all the data to the file geodatabase to which you want to apply time or export restrictions. Be sure you have all the data you want to restrict in the file geodatabase when you apply the licence. You can add more data later that is not restricted, but you cannot add more data that is restricted.

To apply restrictions to more data later, you must license a new file geodatabase. There are many ways to load data to a file geodatabase; here is a simple example highlighting how to load data into the file geodatabase:

1. Right click the file geodatabase and choose import



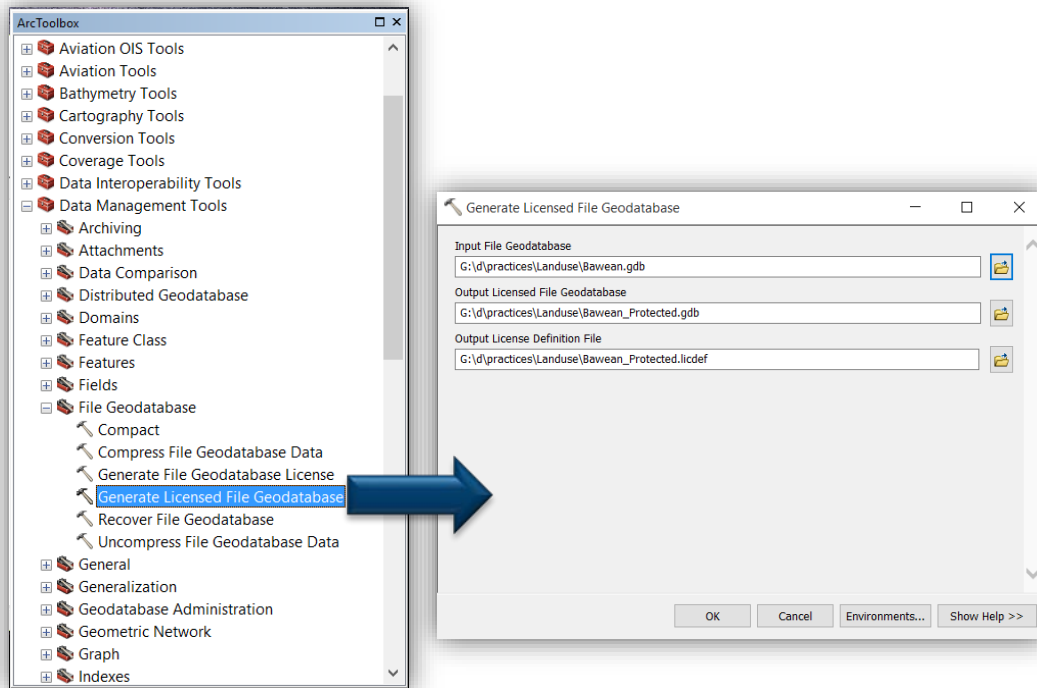
2. Import all feature classes you want to apply restrictions to



3. Click OK

## License the file geodatabase

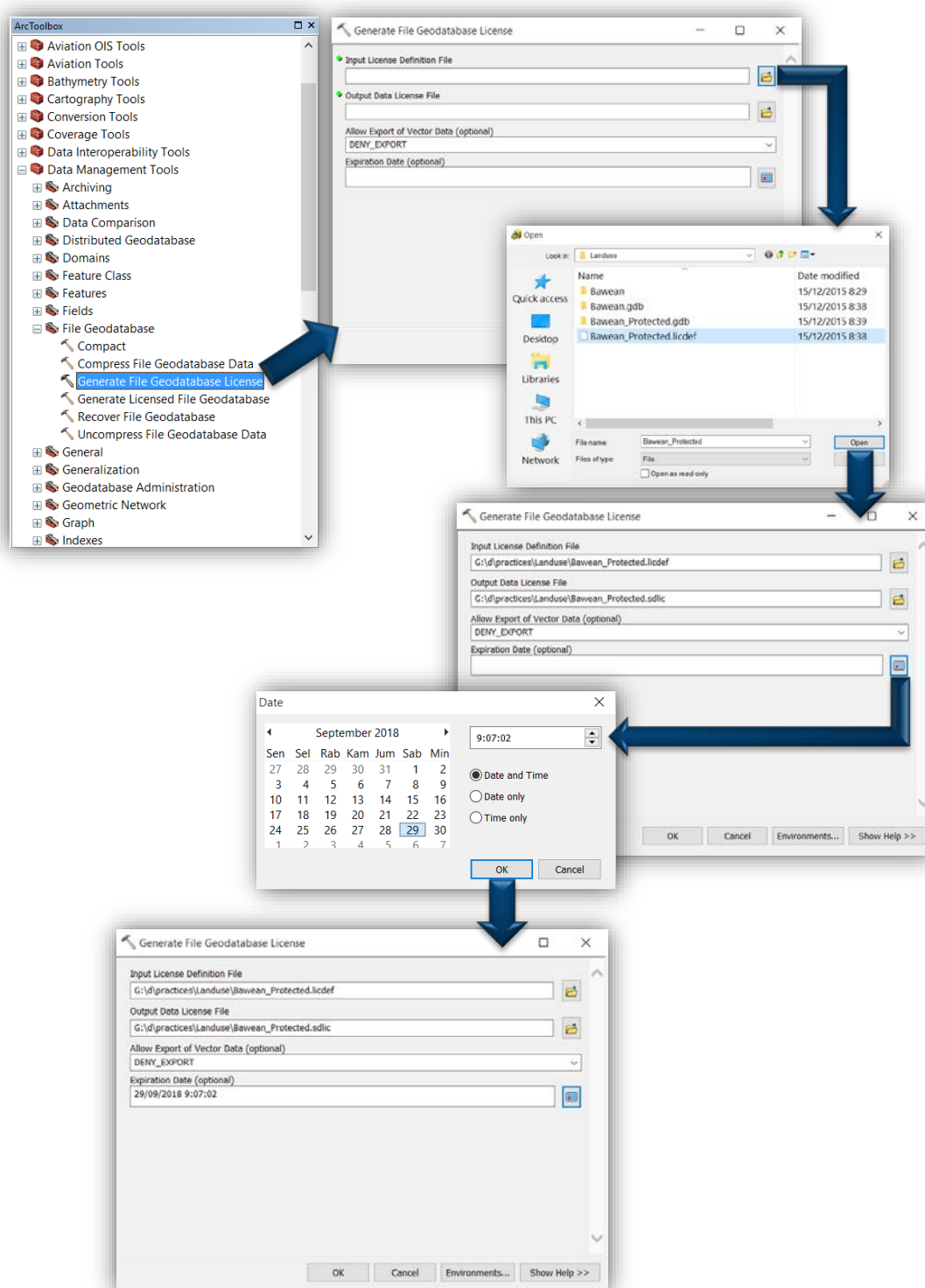
Run the 'generate licensed file geodatabase' tool or a script that calls the tool to license the file geodatabase you created and populated with data.



The 'generate licensed file geodatabase' tool modifies the file geodatabase to support data licensing and creates a licence definition file (\*.licdef). This file includes the information required to license data for distribution. You will need this file to generate a licence file.

Once licensed, the file geodatabase cannot be unlicensed. Also, the geodatabase contents cannot be displayed in ArcGIS until a licence file (\*.sdlic) is created and applied to the client.

## Generate a licence file



Use the 'generate file geodatabase licence' tool or a Python script that calls the tool to define and generate a licence file. When defining the licence file, you have the option to allow an end user to export the feature classes within the file geodatabase. By default, feature classes cannot be exported with the data licence file installed.

When defining the licence file, you also have the option to set an expiration date for the licence file, after which date the file's geodatabase contents can no longer be displayed. This allows a set term for a licensed geodatabase. For example, if you choose to have access expire 7 April, starting 8

April the licensed data will no longer be accessible. By default, no expiration date value is set, which means the data licence file will never expire.

*Please note: The interface uses a standard date/time tool to define expiration. Even though this tool allows you to define an expiration time, that time is not honoured by the system – data licences always expire at midnight.*

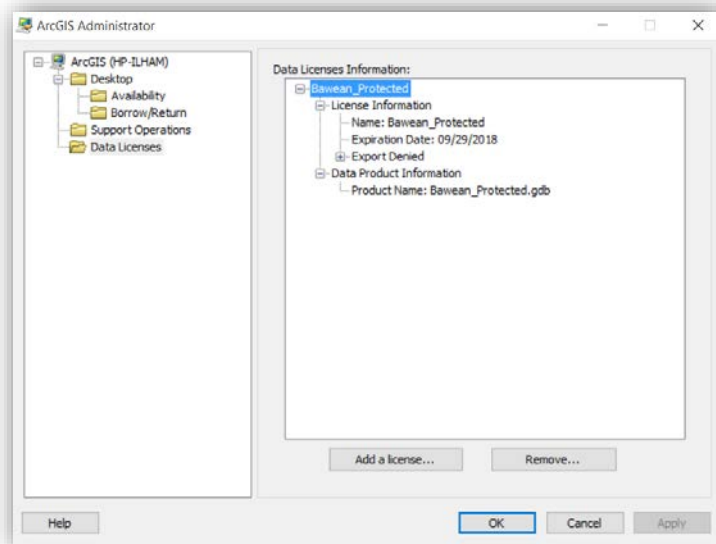
Once the licence has been generated, any additional data loaded to the file geodatabase will not be licensed. Therefore, if you want to share other data that does not need to be licensed, you can add it now.

### Apply the licence to the client

Any ArcGIS client that needs to access the licensed data must have the licence file installed. You and anyone you send the geodatabase and licence file to must configure ArcGIS clients to access the data.

### Apply a licence to ArcGIS for Desktop

1. Use ArcGIS Administrator to apply the licence for a file geodatabase
2. Start ArcGIS Administrator
3. Open the data licences folder
4. Click 'add a licence'
5. Select the licence (.sdlic) file
6. The licence is added to the data licences information list. You can expand licence information to see the licence expiration date – if one exists – and whether the data is licensed for export



7. Click OK

### Apply a licence to ArcGIS for Server

There is a licensing tool installed with ArcGIS for Server you can use to recognise the file geodatabase licence.

- » On a Windows server:

Open a command prompt and run the `datalicinstall` tool, located at `<ArcGIS Server Installation Directory>\Server\bin`.

» On a Linux server

Open a shell command and run the `datalicinstall` tool, located at `<ArcGIS Server Installation Directory>/arcgis/server/tools`.