



Public Safety and Sustainable Spatial Planning

Faris Sofi
Esri Indonesia

A Dynamic World Creates New Intelligence Challenges

New Challenges for a Connected World

Immigration Control

Cyber Warfare

Natural Disasters

Border Security

Transnational Terrorism

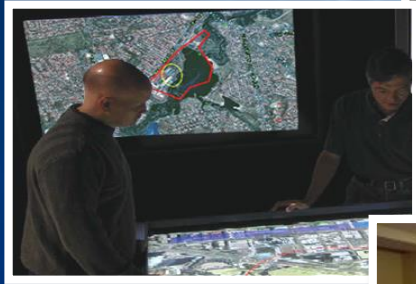
Political Crisis

Energy Security

Organized Crime

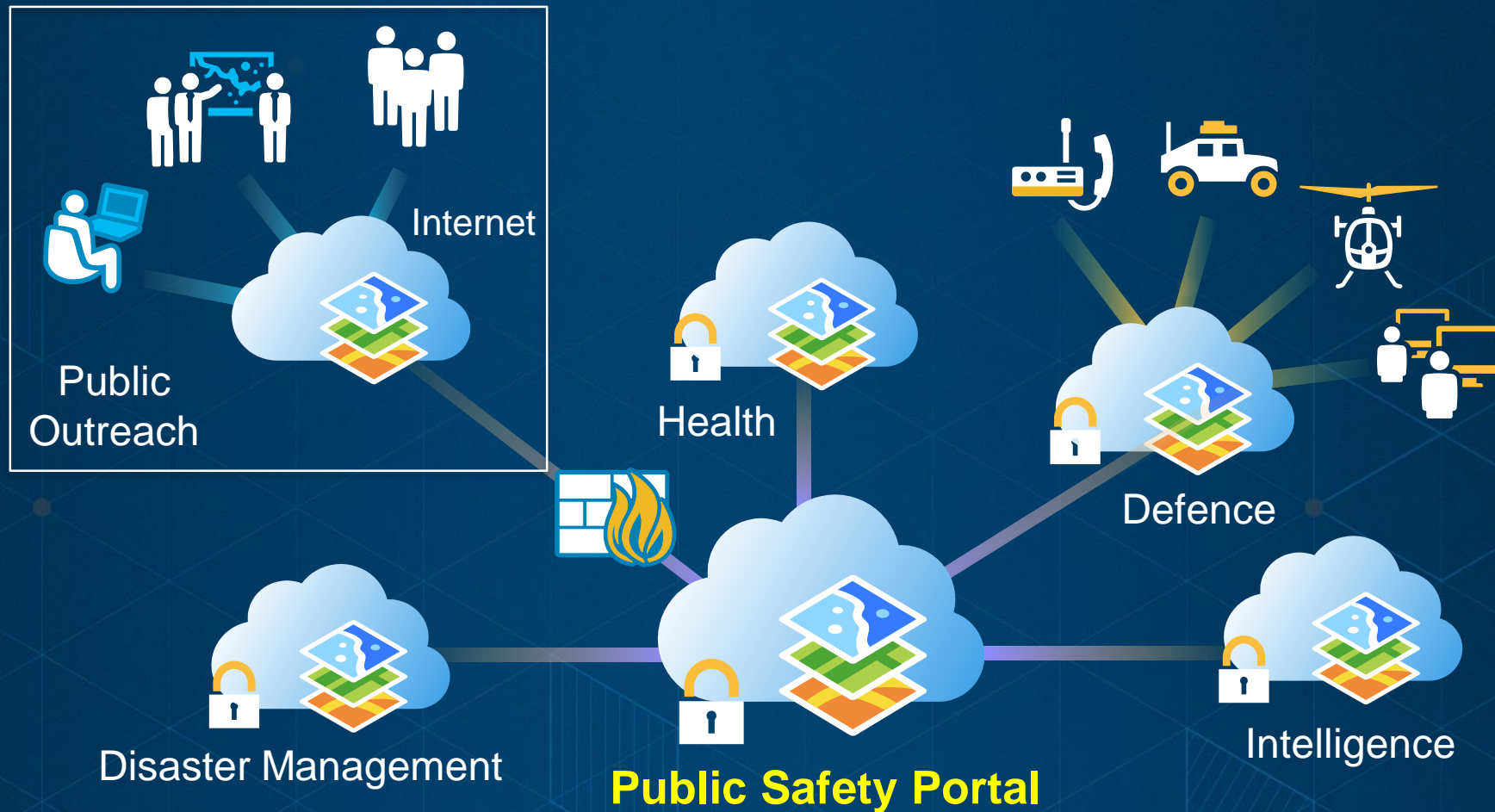
Infectious Diseases

**We Need Integrated Approaches . . .
. . . Enabling Better Understanding**



Challenge: Extending the Complete Public Safety Community

A framework for shared situational awareness & unity of action for complex operations



Automation...
Governance...

Best Practice for Public Safety

To support the complex operations of Public Safety, GIS-based systems must provide:

Relevance – Solve real problems for real people every day

Agility – The ability to change and modify when required

Flexibility – The ability to expand (scale) and retract as required

Ease Of Use – Usable by operations personnel

Data Sharing – Sharing dynamic data across organizations for shared situational awareness



Data Collaboration is key

Web GIS Enables New Types of Collaboration

Connecting Individuals, Organizations and Communities



... Creating a Nervous System for Indonesia

SPATIAL DATA IN ONE PORTAL

SEARCH DATA



Citra Satelit Resolusi Tinggi

Kebijakan Satu Peta

Peta Batimetri Indonesia

Peta Dampak Banjir Belitung

MAP VIEWER



Visualisasi dan Analisa

SOCIAL MEDIA APPS



Pencarian Keyword berdasarkan peta

DOWNLOAD



Download Metadata

Status Sempul Jaringan

- Pilih Sempul -



Kementerian Pekerjaan Umum dan Perumahan Rakyat
Terhubung



Kementerian Lingkungan Hidup dan Kehutanan
Terhubung



Kementerian Kelautan dan Perikanan
Terhubung



Kementerian Kesehatan
Terhubung



Provinsi DKI Jakarta
Terhubung

« awal < previous ... 3 4 5 6 7 8 9 10 11

<http://portal.ina-sdi.or.id>

ArcGIS—The secure and trustworthy location platform

Trust.ArcGIS.com is your go to resource for security, privacy, and compliance information



<https://trust.arcgis.com/>

gis.bmkg.go.id/arcgis/rest/services

ArcGIS REST Services Directory

Home > [services](#)

[JSON](#) | [SOAP](#)

Folder: /

Current Version: 10.61

View Footprints In: [ArcGIS Online Map Viewer](#)

Folders:

- [Analisis curah hujan](#)
- [Analisis MMI](#)
- [BMKG](#)
- [BUI](#)
- [DISPLAY DAILY](#)
- [Hosted](#)
- [KSP](#)
- [KU](#)
- [kualitas udara](#)
- [Normal hujan 30th](#)
- [Palu](#)
- [percepatan tanah](#)
- [Percepatan tanah](#)
- [Perubahan Iklim](#)
- [Portal GIS BMKG](#)
- [prakiraan cuaca harian](#)
- [prakiraan hujan bulanan](#)
- [prakiraan musim](#)
- [Prakiraan tinggi gelombang](#)
- [psh](#)
- [Pusat Gempa dan Tsunami](#)
- [Pusat Meteorologi Publik](#)
- [Pusat Meteorologi Publik](#)

Sign in to PUSTIKOM KEMENTERIAN PERHUBUNGAN

Username

Password

Keep me signed in

SIGN IN

[Forgot password?](#)

secure service

service online

SEVEN DIFFERENT AGENCIES SERVICES COLLABORATION

Legenda

Gunung (Mountain)

- Normal (Level 1)
- Waspada (Level 2)
- Awas (Level 4)

Arah Angin (Wind Rirection)

↑

Cuaca (Weather)

- Hujan Lokal (Local Rain)
- Berawan (Cloudy)



Jumlah Titik Gempa

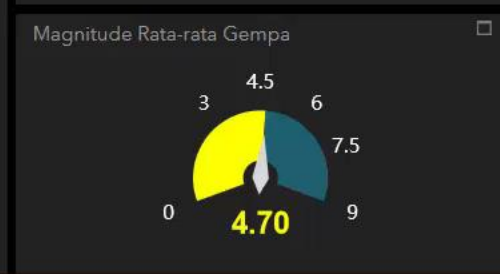
2

CCTV

2017-11-27 14:12:25

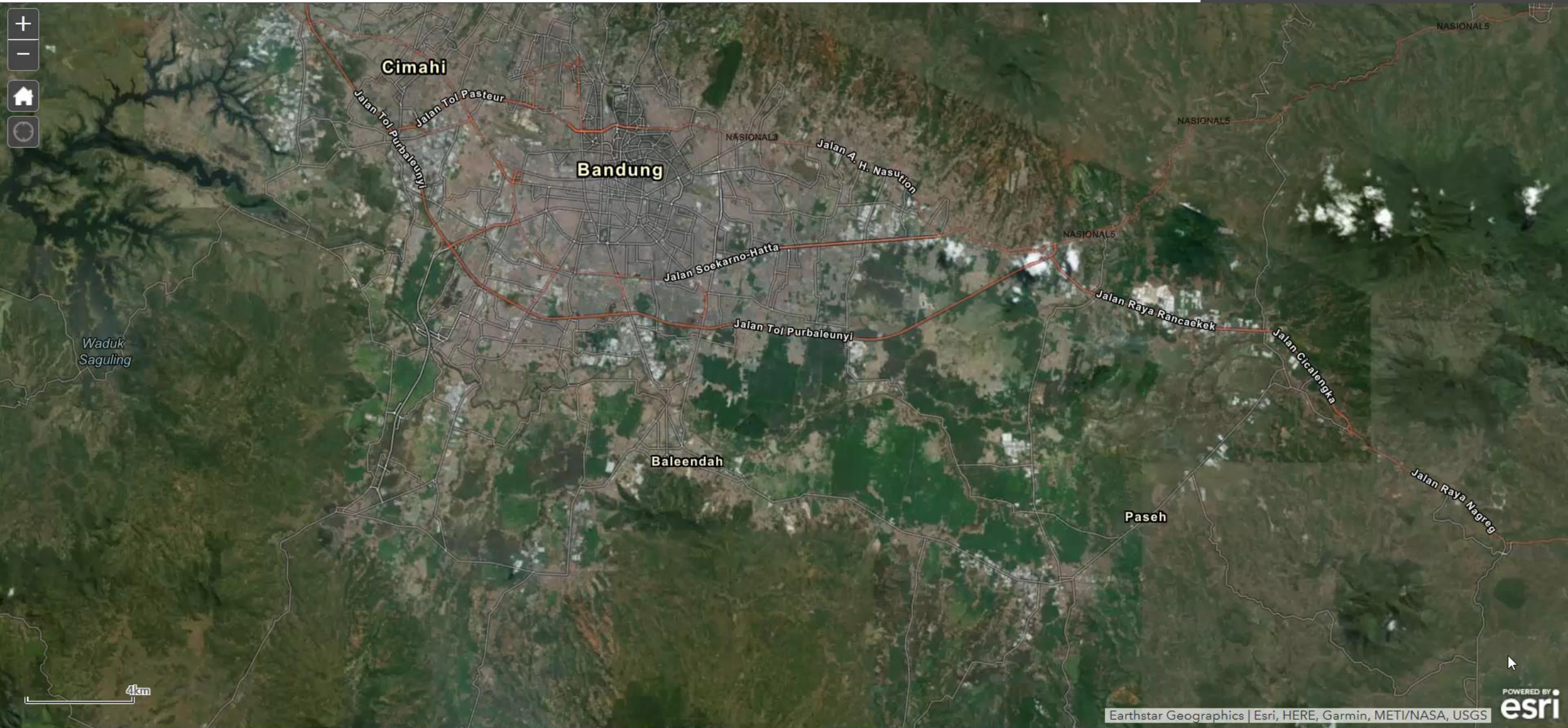
TELKOMSEL

POS Pengamatan Gunung Agung
Desa Rendang Karangasem



COLLABORATION for SPATIAL PLANNING

Peta Kolaborasi



Waduk Saguling

Cimahi

Bandung

Baleendah

Paseh

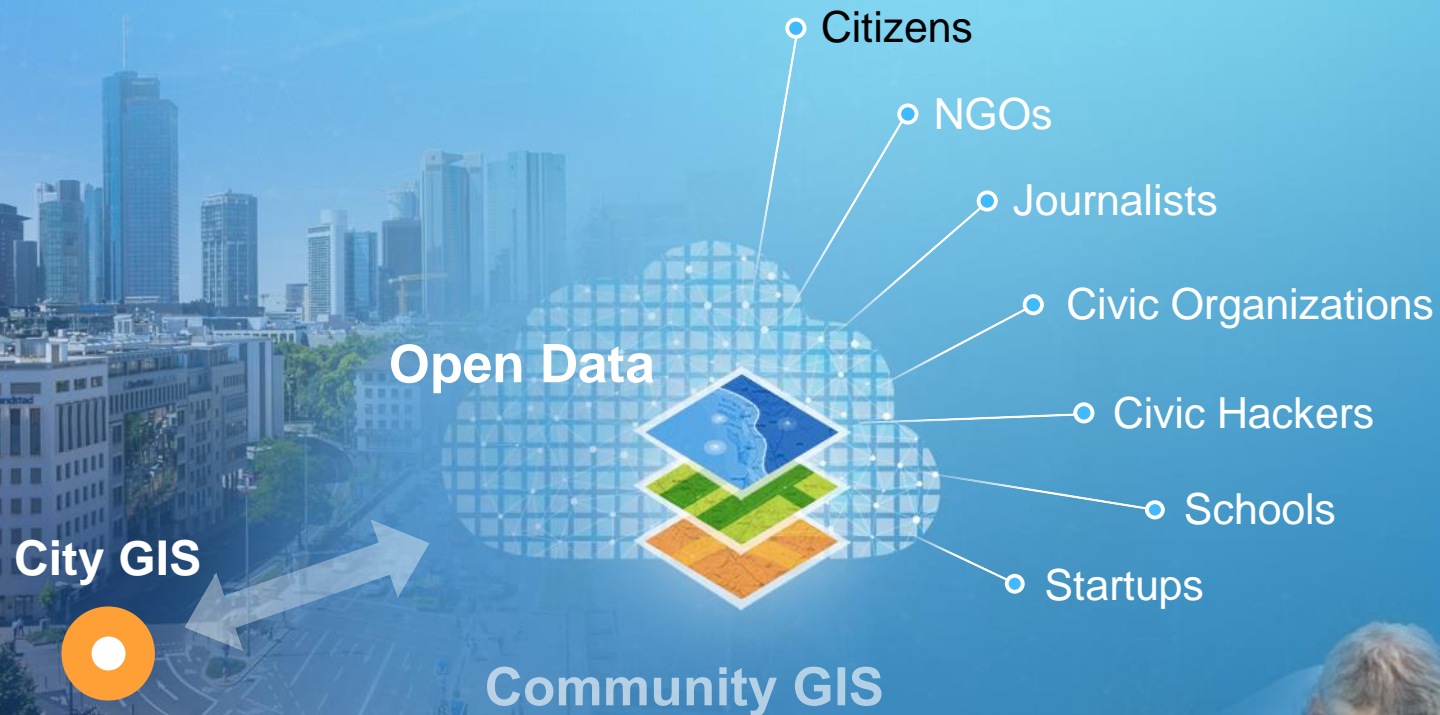
4km



GIS Empowers Community Engagement

Smart GIS Engages Communities

“Community GIS” Is a New Pattern

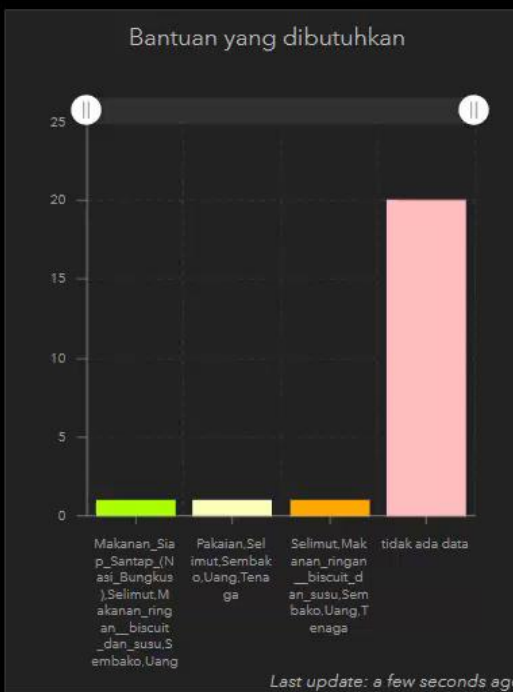
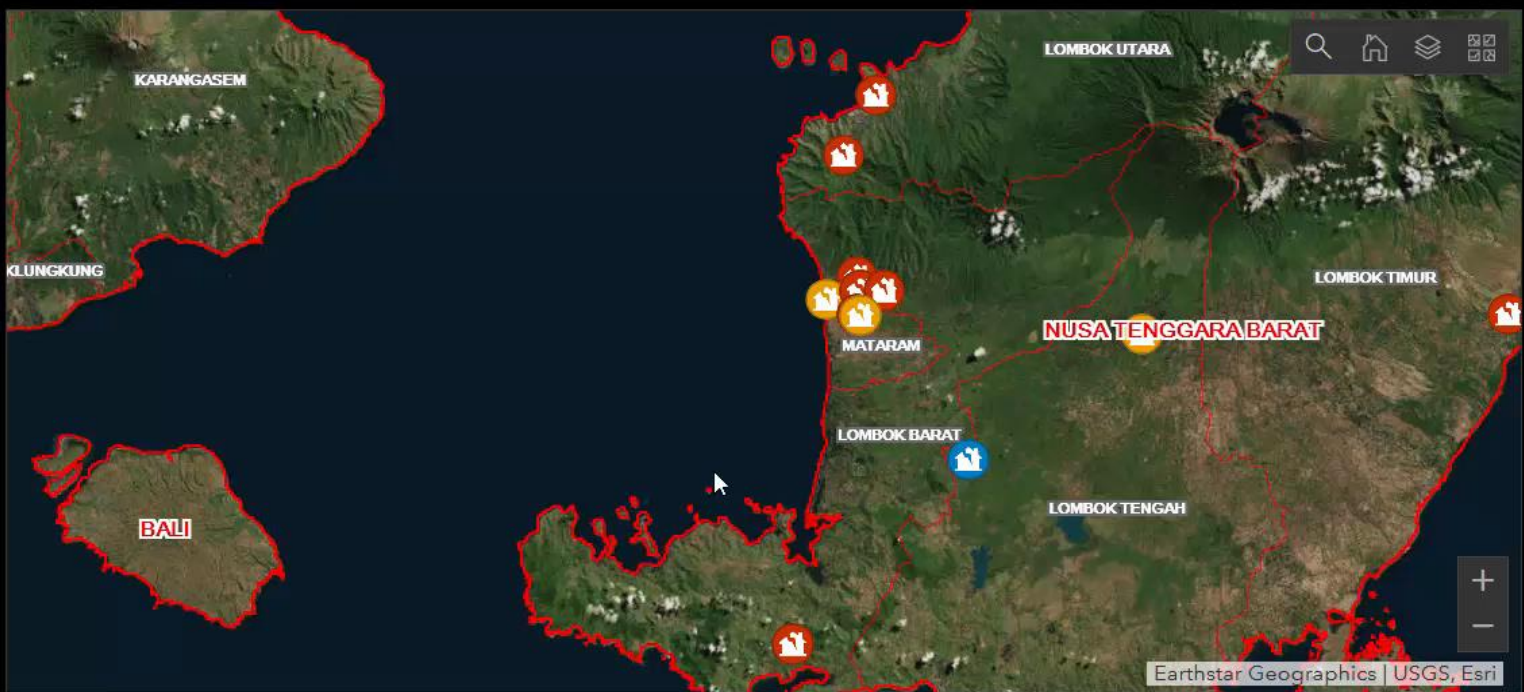


Engaging
All Citizens

*Providing a Platform for
Civic Engagement . . .*

Enabling Smart Communities . . .

Dashboard Laporan Publik

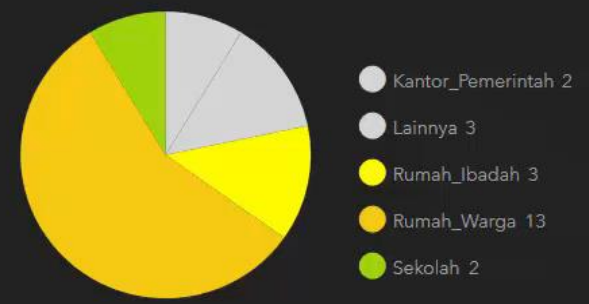


Jumlah Laporan

23

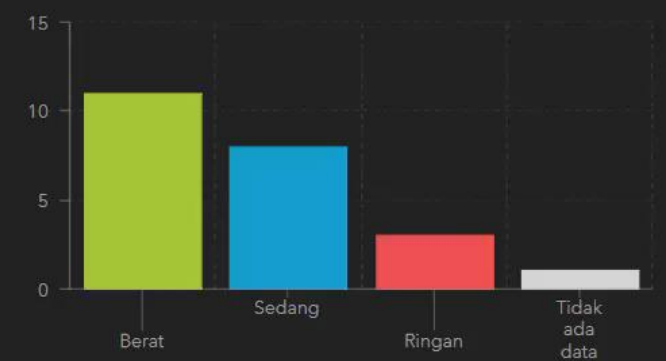
Last update: a few seconds ago

Jenis Objek Terdampak



Last update: a few seconds ago

Kategori Kerusakan



Last update: a few seconds ago

Daftar Laporan

- 8/9/2018, 4:32 PM - Rayindra Yonang Kresnady - Rumah_Warga - Rusak Sedang
- 8/9/2018, 4:12 PM - Rayindra Yonang Kresnady - Rumah_Warga - Rusak Sedang
- 8/9/2018, 11:41 AM - Rayindra Yonang Kresnady - Rumah_Warga - Rusak Berat
- 8/9/2018, 11:16 AM - Lutfi Ramadani - Kantor_Pemerintah - Rusak Berat
- 8/9/2018, 10:43 AM - Risqi Nur Ahmadi - Kantor_Pemerintah - Rusak Berat

Last update: a few seconds ago

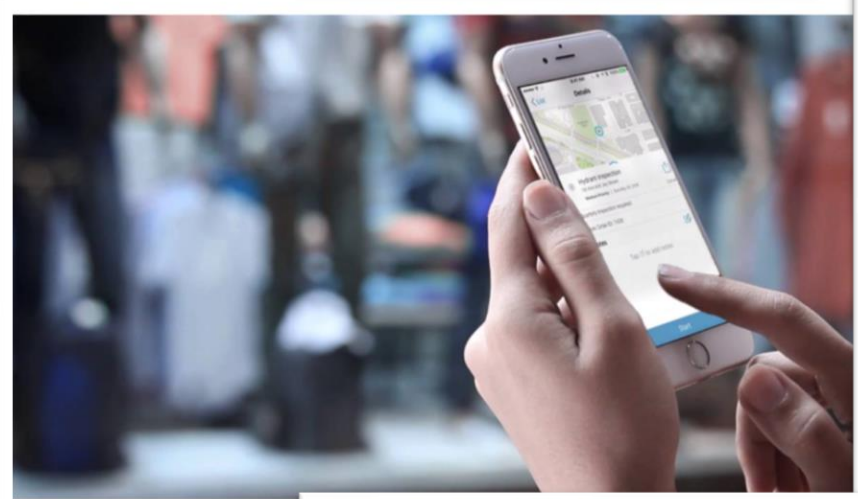


Increasing Adoption of GIS

Ease of Use

The Public Safety Consumer

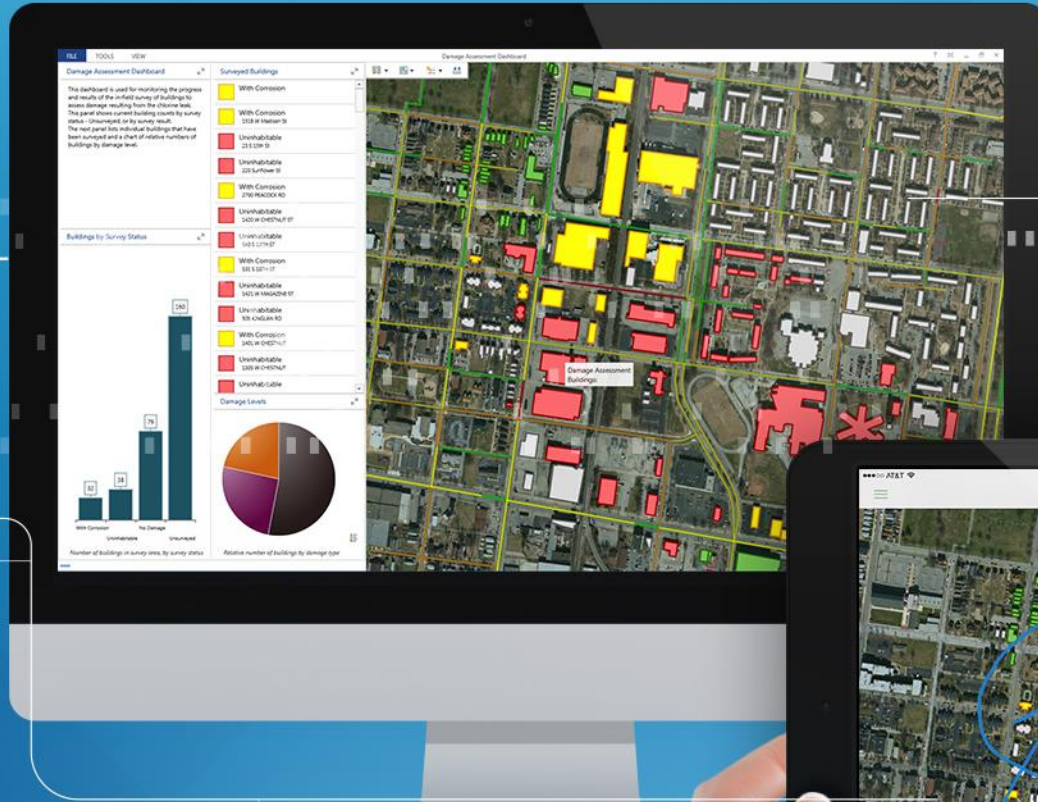
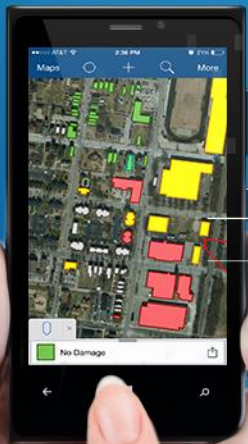
Public Safety Analysts, Commanders and Operators...and the Public



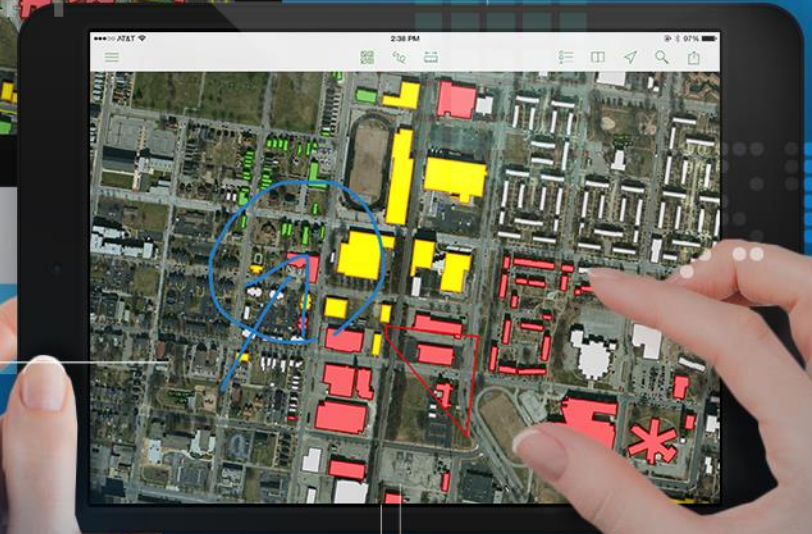
Making GIS Available Everywhere

Enabling a Mobile Workforce With Easy-to-Use Applications

Any Device



Anytime



Microsoft HoloLens





GIS as a System of Insight

Flexibility

Web GIS Embeds Advanced Analytics

Providing a System of Insight



Filter

Gunakan filter di bawah ini untuk menyortir kategori kejahatan dan tanggal kejadian kejahatan.

Pilih Kasus

Tiada filter

Kantor Polres

Tiada filter

Subdit Dit Reskrimum

Tiada filter

Interval Waktu

Calendar and clock icons for time interval selection.

Calendar and clock icons for time interval selection.

Pencarian LP

Tiada Filter

Pencarian Pelapor

Tiada Filter

Pencarian Tersangka

Tiada Filter

Total Kasus

706

LP/1727/XI/2017/PMJ/RJS KASUS TRANSPORTASI ONLINE 11/1/2017, 7:00 AM

LP/608/III/2018/RJS KASUS TRANSPORTASI ONLINE 3/31/2018, 7:00 AM

LP/426/III/2018/RJS KASUS TRANSPORTASI ONLINE 3/3/2018, 7:00 AM

LP/438/III/2018/PMJ/RJS KASUS TRANSPORTASI ONLINE 2/24/2018, 7:00 AM

LP/659/K/IV/2018/PMJ/RJS KASUS TRANSPORTASI ONLINE 4/7/2018, 7:00 AM

LP/143/I/2018/RJS KASUS TRANSPORTASI ONLINE 1/21/2018, 7:00 AM

LP/94/PG/K/XI/2016 KASUS TRANSPORTASI ONLINE 11/16/2016, 7:00 AM

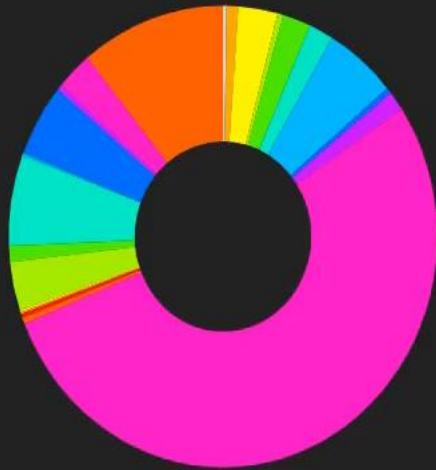
LP/668/K/III/2018/SPKT/ KASUS TRANSPORTASI ONLINE 3/31/2018, 7:00 AM

LP/B/660/VIII/2015/PMJ/RESTRO TNG KOTA KASUS TRANSPORTASI ONLINE 8/14/2015, 7:00 AM

LP/B/661/VIII/2015/PMJ/RESTRO TNG KOTA KASUS TRANSPORTASI ONLINE 8/14/2015, 7:00 AM

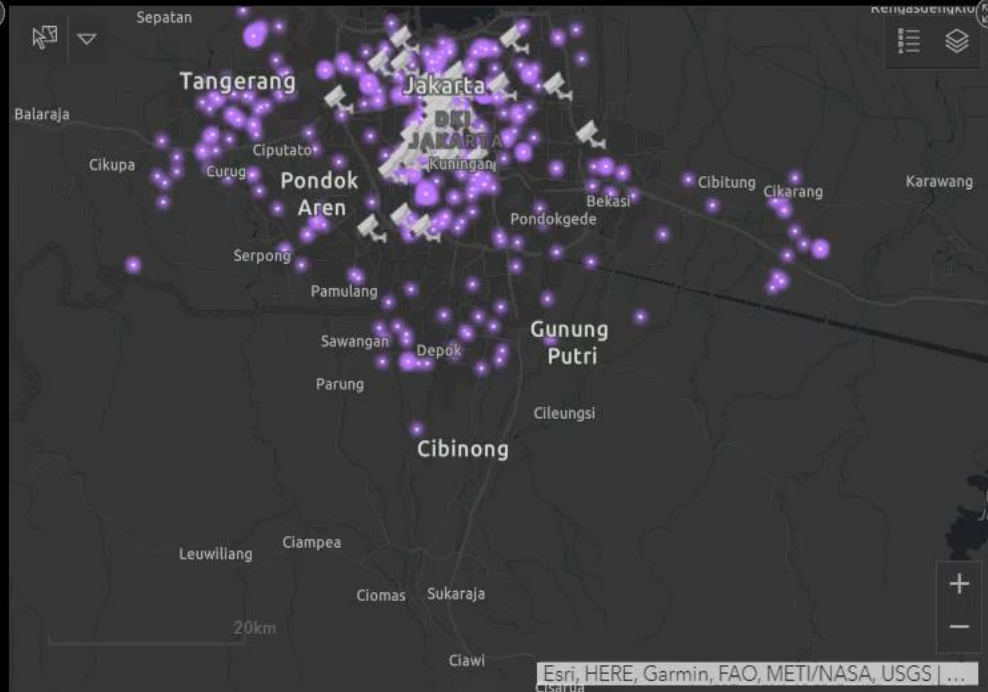
LP/B/662/VIII/2015/PMJ/RESTRO TNG KOTA KASUS

Kategori Kasus



●	2	●	KASUS CURAT & CURAS MINIMARKET	6
●	21	●	KASUS HATE SPEECH	3
●	15	●	KASUS LELANG	13
●	38	●	KASUS MINIMARKET	3
●		●	KASUS GENG MOTOR	
●		●	KASUS LAKA KERJA	
●		●	KASUS MENONJOL	

Waktu Kejadian



Kasus yang Terdaftar di Polres

PO LR ES	PO LR ES	PO LR ES	PO LR ES TA
BA ND AR A SO ET TA	ME TR O BE KA SI KO TA	ME TR O JA KA RT A TI MU R	DE PO K

1 of 25

CCTV: CCTV_MCP_JEMBATAN3_TCP_8939



Last update: 3 minutes ago



Easy to Use when Required
Agility



FEATURED MAPS & APPS

- 3D ANALYSIS
- A STORY OF PALU EARTHQUAKE
- DASHBOARD OF AFFECTED POPULATION
Urban Village (Kawuhari)
673
Population in 1,344,871
- DASHBOARD OF IMPACTED RESIDENCE
16,961

Emergency Spatial Support Center (ESSC) for Central Sulawesi Earthquake and Tsunami

This geospatial portal contains accurate information regarding the earthquake that occurred in Palu and Donggala, September 2018. This application is intended for every stakeholder and the public who need data related to the earthquake in Palu and Donggala. The application development on this portal is a collaboration between ESSC Esri Indonesia and the University of Indonesia. Emergency Spatial Support System, abbreviated as ESSC, is a program initiated by Esri Indonesia. It focuses in national disaster emergency response using geographic information system (GIS), map visualization and location analytics to spread insightful awareness of the occurring disaster.



esri Indonesia