



BADAN INFORMASI
GEOSPASIAL

b

One Map Policy for Sustainable Development of Indonesia

Prof. Dr. Hasanuddin Z. Abidin

**Head
Geospatial Information Agency of Indonesia**

Presentation
at the Senior Leaders Forum 2018
“Enabling Indonesia 4.0”
Jakarta, 23 October 2018



Indonesia: The Maritime Continent



Geospatial Information is compulsory for managing and developing the country.

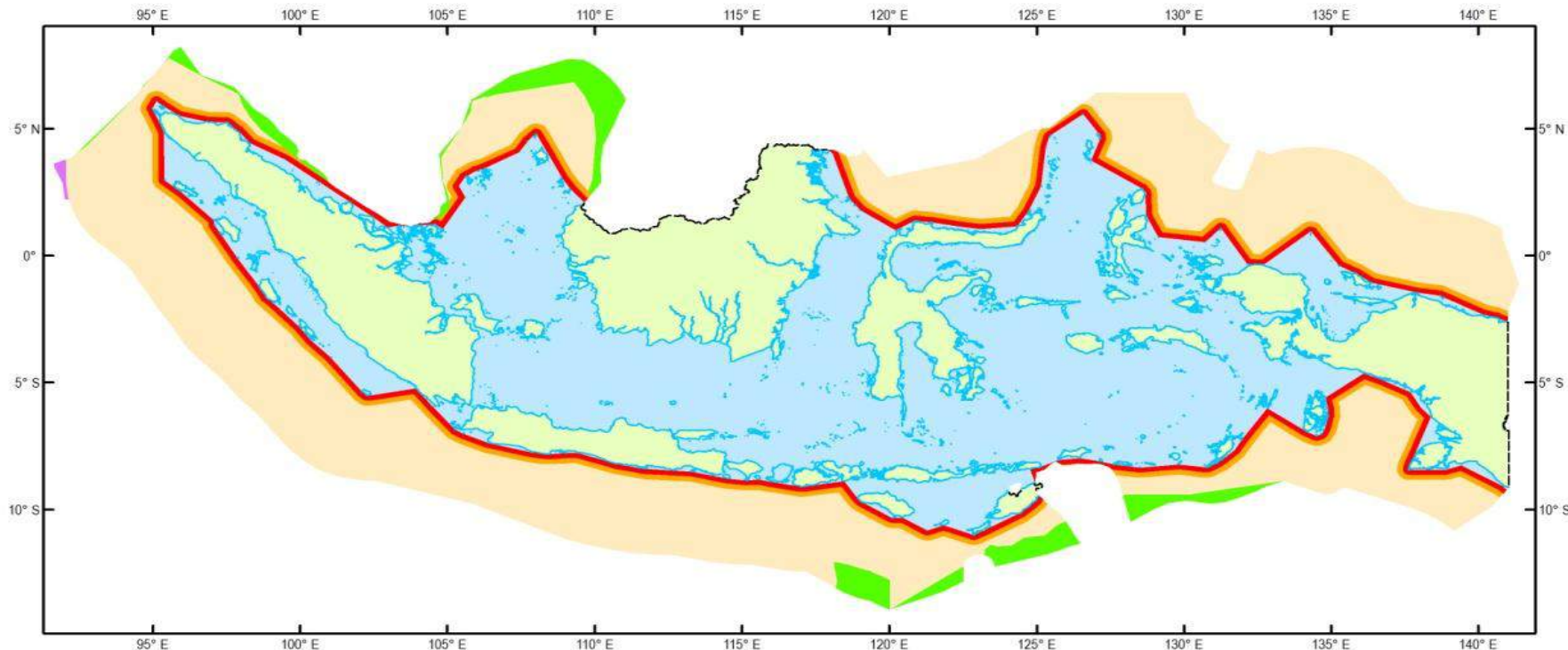
Volume of Geospatial Information will be enormous (Big Spatial Data).

Strong Human Resources and Industries in Geospatial Information are compulsory.

INDONESIA IS HUGE COUNTRY:
 Ujung Barat (Sabang) – Timur (Merauke) = London – Bagdad
 Ujung Utara (Kep. Satal) – Selatan (P. Rote) = Jerman – Aljazair

Indonesia Maritime Zone

Maritime area is about 63%
 Geospatial Information is compulsory for managing and developing the maritime area of Indonesia

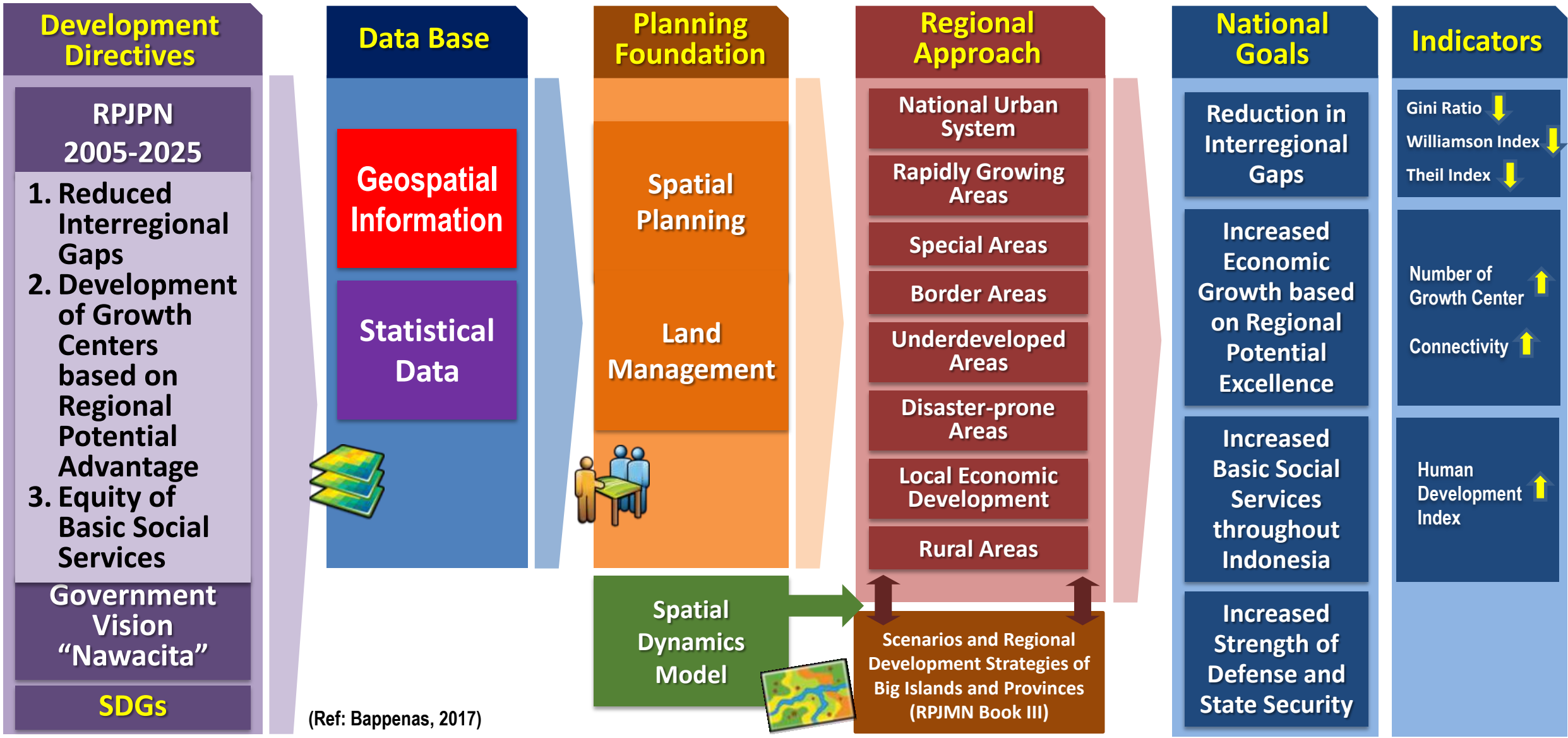


SOUVERIGNTY ZONE		in km²
1. Internal Waters and Island		3.092.085
2. Territorial Waters		282.583
SOUVERIGN RIGHT ZONE		in km²
1. Economic Exclusive Zone		2.936.345
2. Continental Zone		2.749.001
Continental Zone > 200 nm		4.209
Maritime Area (km²)		3.223.137
Land Area (km²)		1.890.739

Keterangan

- Batas Darat
- Garis Pantai
- Darat
- Perairan Pedalaman & Kepulauan
- Laut Teritorial
- Zona Tambahan
- Landas Kontinen (LK) tidak bertampalan
- Zona Ekonomi Eksklusif (ZEE) tidak bertampalan
- LK & ZEE bertampalan

The Roles of Geospatial Information and Statistical Data for National Sustainable Development Planning



National Development Paradigm → THIS (Thematic, Holistic, Integrative, Spatial)

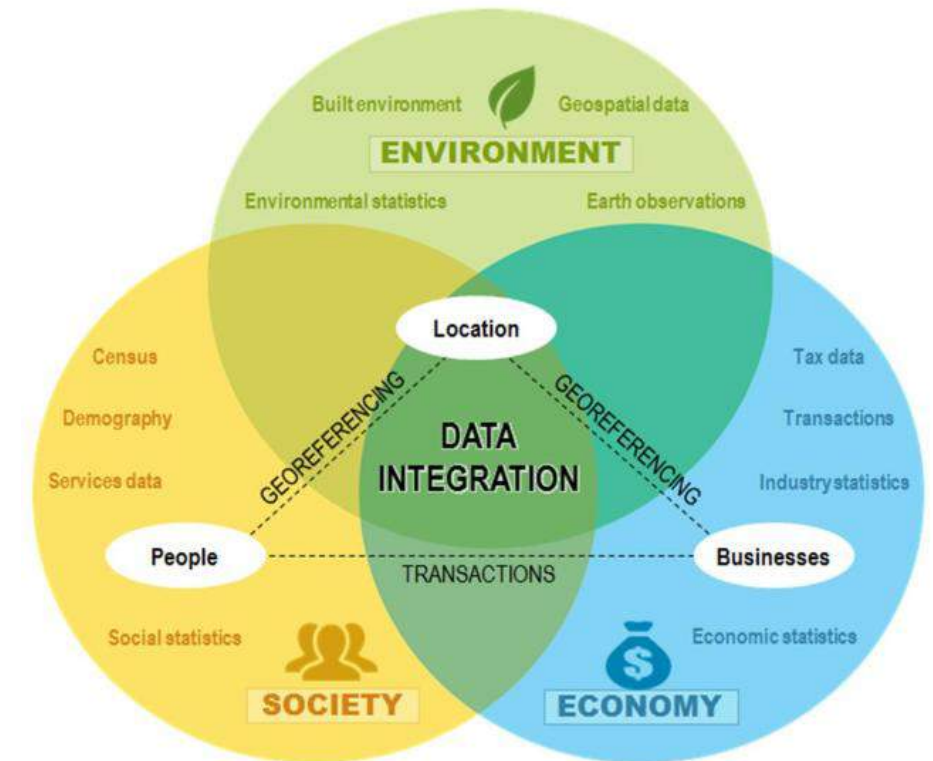
Geospatial Information for Sustainable Development



SUSTAINABLE DEVELOPMENT GOALS
17 GOALS TO TRANSFORM OUR WORLD



Location:
Link between society,
the economy and the environment



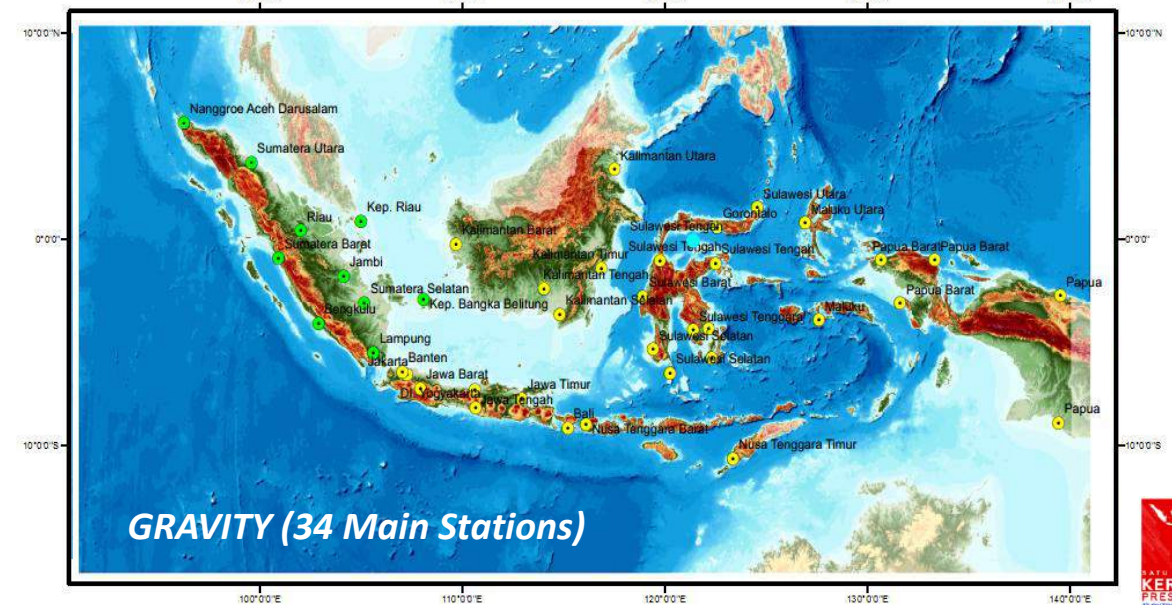
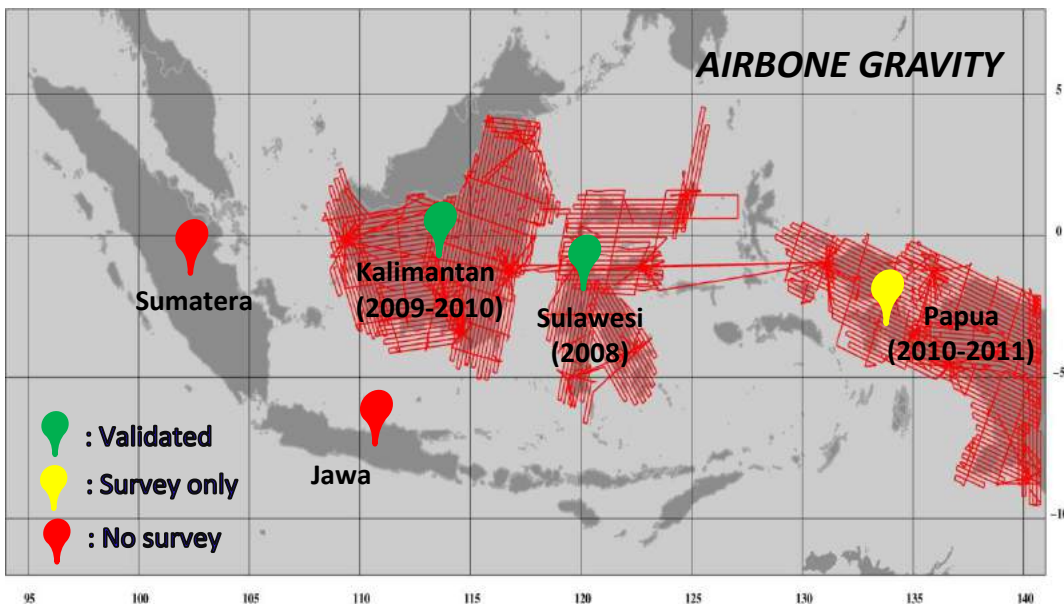
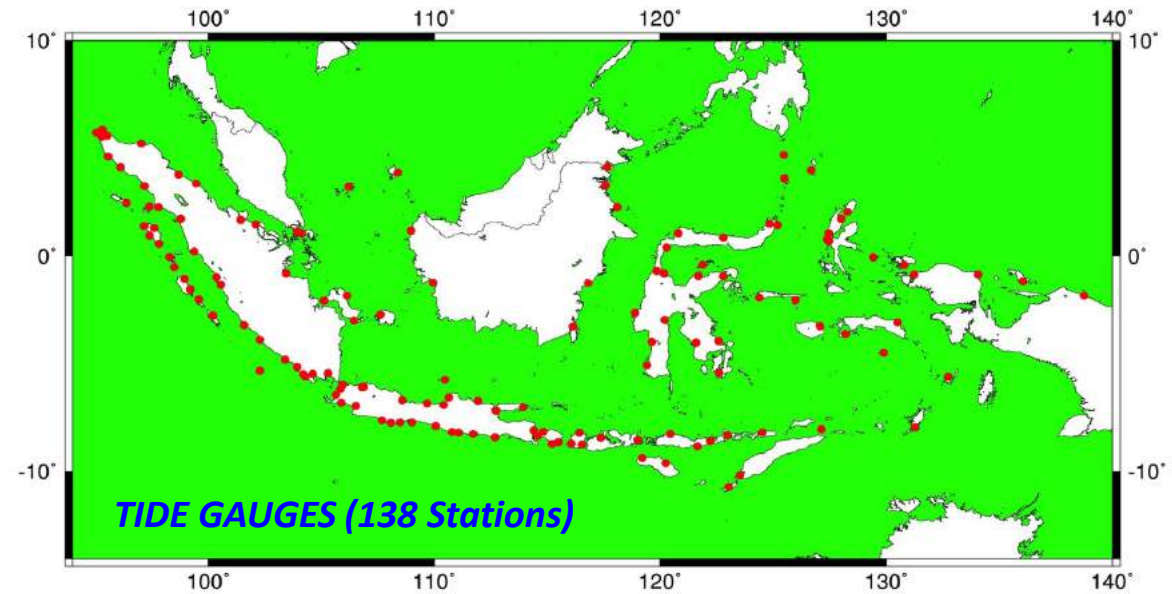
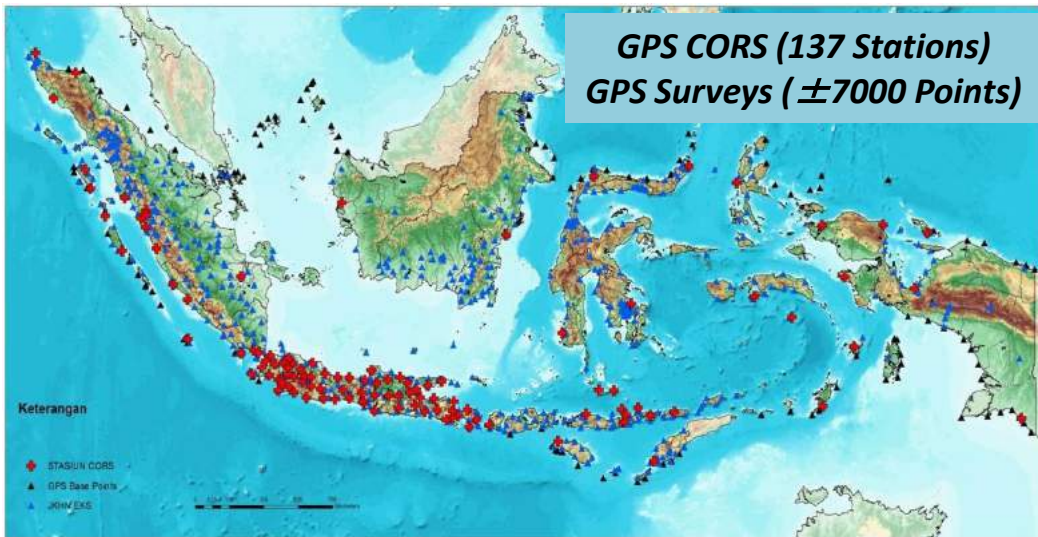
Ref: UN-GGIM (2018)

Geospatial Information Agency of Indonesia: Business Process



- Base Map Features:**
1. Coastline
 2. Hypsographic
 3. Hydrographic
 4. Geographic Name
 5. Administrative Boundary
 6. Transportation & Utility
 7. Building & Social Facility
 8. Land Cover

Geospatial Reference Frames of Indonesia

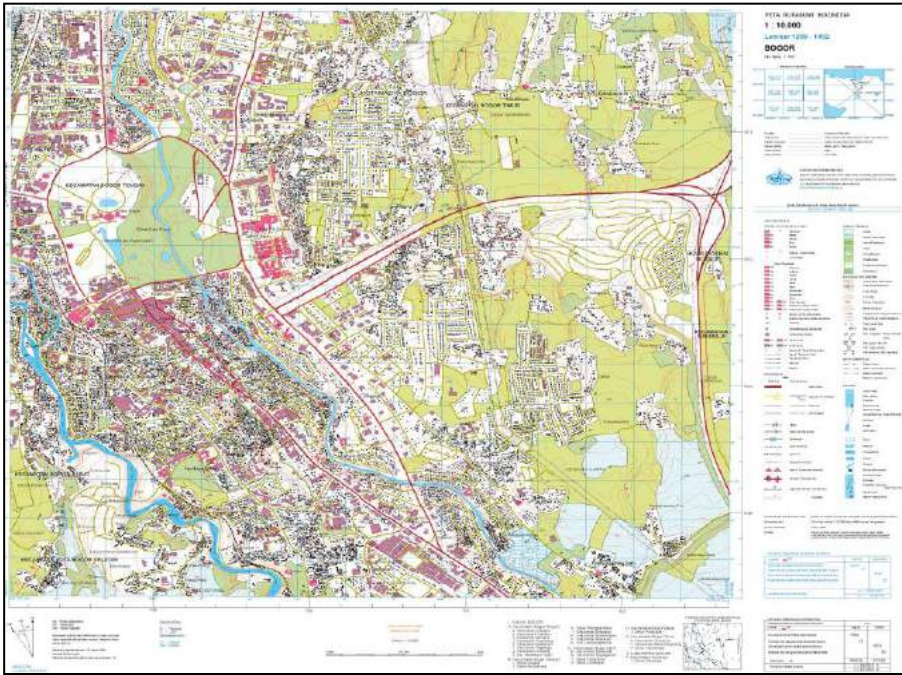


Basemaps of Indonesia

- Topographic Map
- Coastal Area Map
- Marine Area Map



Scales of
1:1000 to 1:1.000.000



Topographic Map

Topographic layers:

1. Coastline
2. Hipsography
3. Hidrography
4. Topographic names
5. Administrative boundary
6. Transportation and utility
7. Building and public facility
8. Land cover

Coastal Area Map

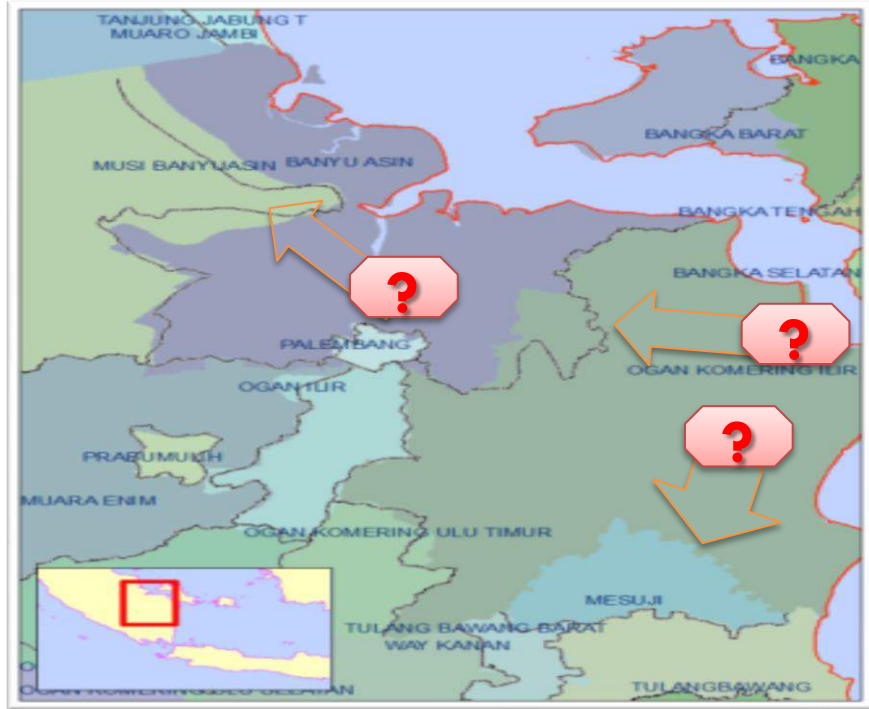


Marine Area Map



One Map Policy (OMP) Background

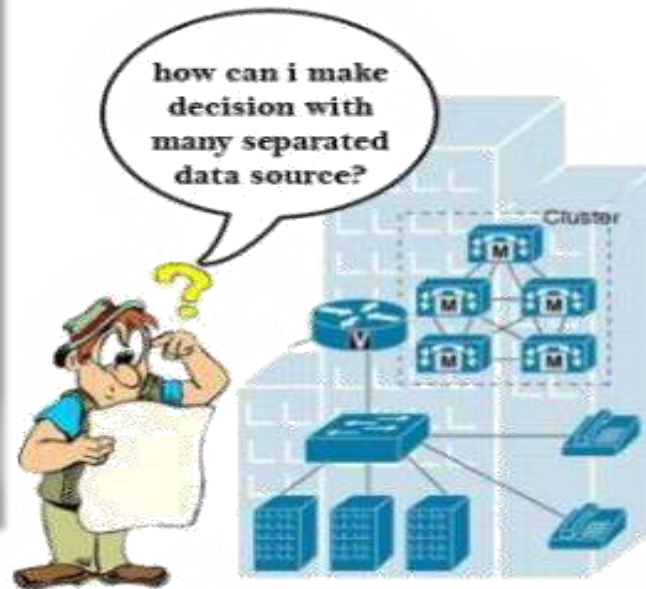
Geospatial Information issues in
Indonesia:
Many Layers and Many Actors



- ❖ More than one institutions produced and published the same map without coordination;
- ❖ Several maps were not created by authorized institutions;
- ❖ Different geospatial information was published such as the number of islands and the size of forest areas;
- ❖ Overlaps of land uses permits (licenses);
- ❖ Basic Geospatial Information was rarely used as the basis for creating maps;
- ❖ Satellite imageries for the same area were purchased by more than one institutions.

THE PROBLEMS OF GEOSPATIAL DATA :

- ❖ *Non-Uniform Georeference.*
- ❖ *Limited Data Availability.*
- ❖ *Out of date and Inaccurate.*
- ❖ *Difficult Accessibility.*
- ❖ *No Optimum Utilization, etc.*



Low quality decision making process and consequently degrade the achievement of the national development goals

Example of Overlapping Permits due to Non Unified Maps

Topographic Map (RBI)

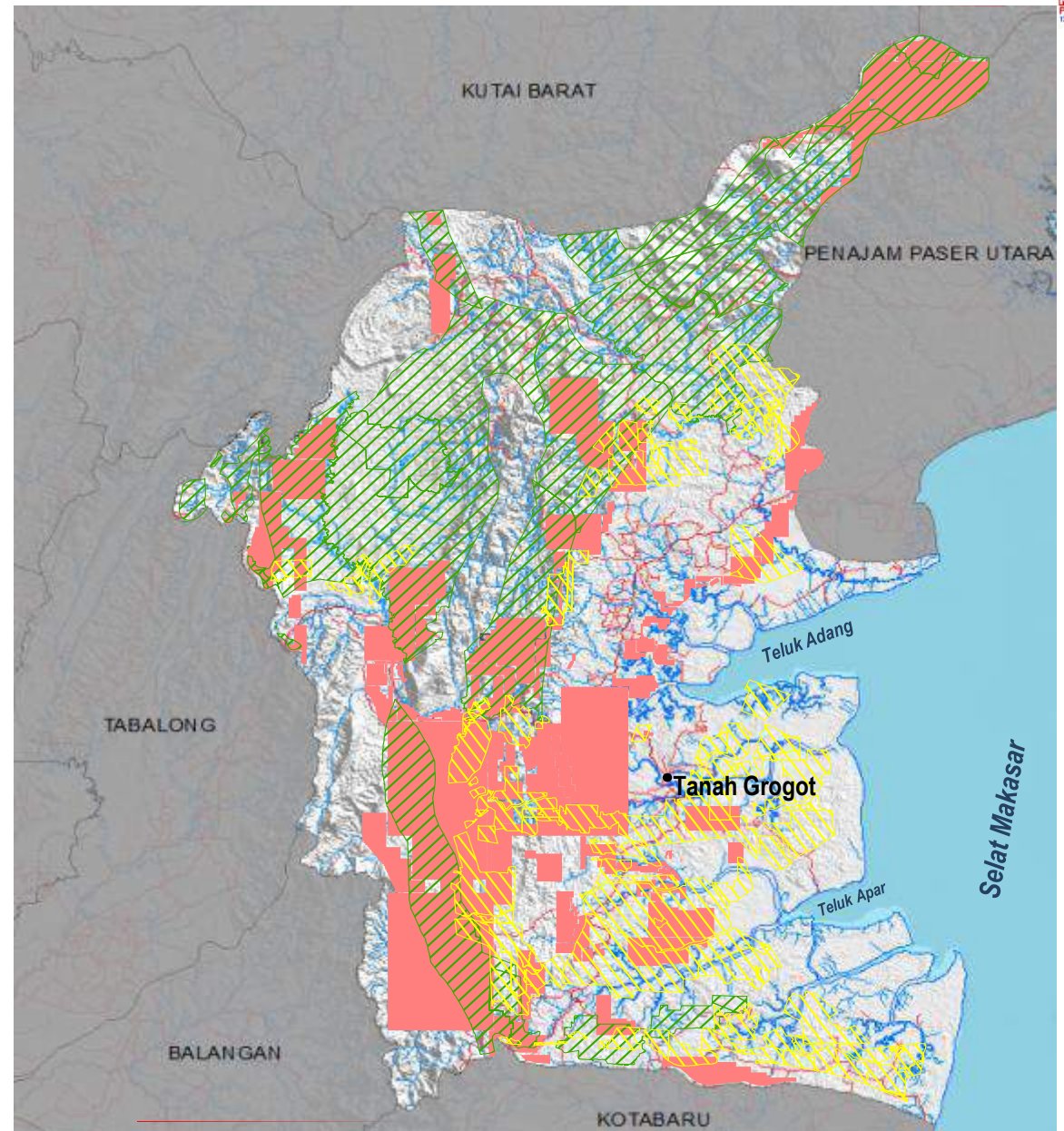
Permits of Mining Sector

Permits of Forestry Sector

Permits of Cadastral Sector

CREATING LEGAL, SOCIAL & ECONOMIC CONFLICTS :

- ✓ Lead to unattractive investment condition
- ✓ Hampering the development process
- ✓ Delaying the project completion
- ✓ Wasting the energy of development



ONE MAP POLICY Program

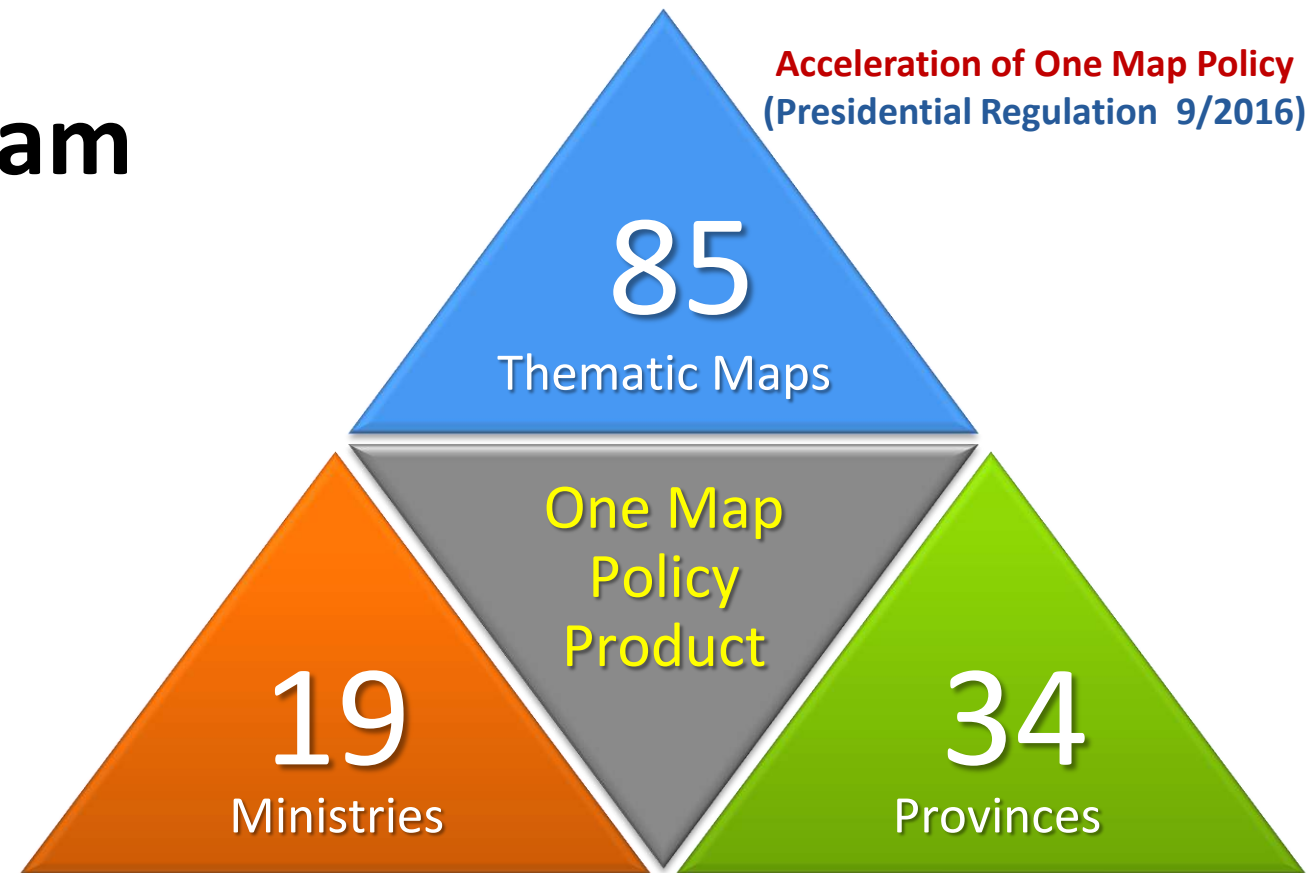
Acceleration of One Map Policy
(Presidential Regulation 9/2016)

CHARACTERISTICS

- One Georeference
- One Standard
- One Database
- One Geoportal

ACTIVITIES

- Compilation
- Integration
- Synchronization
- Data Sharing



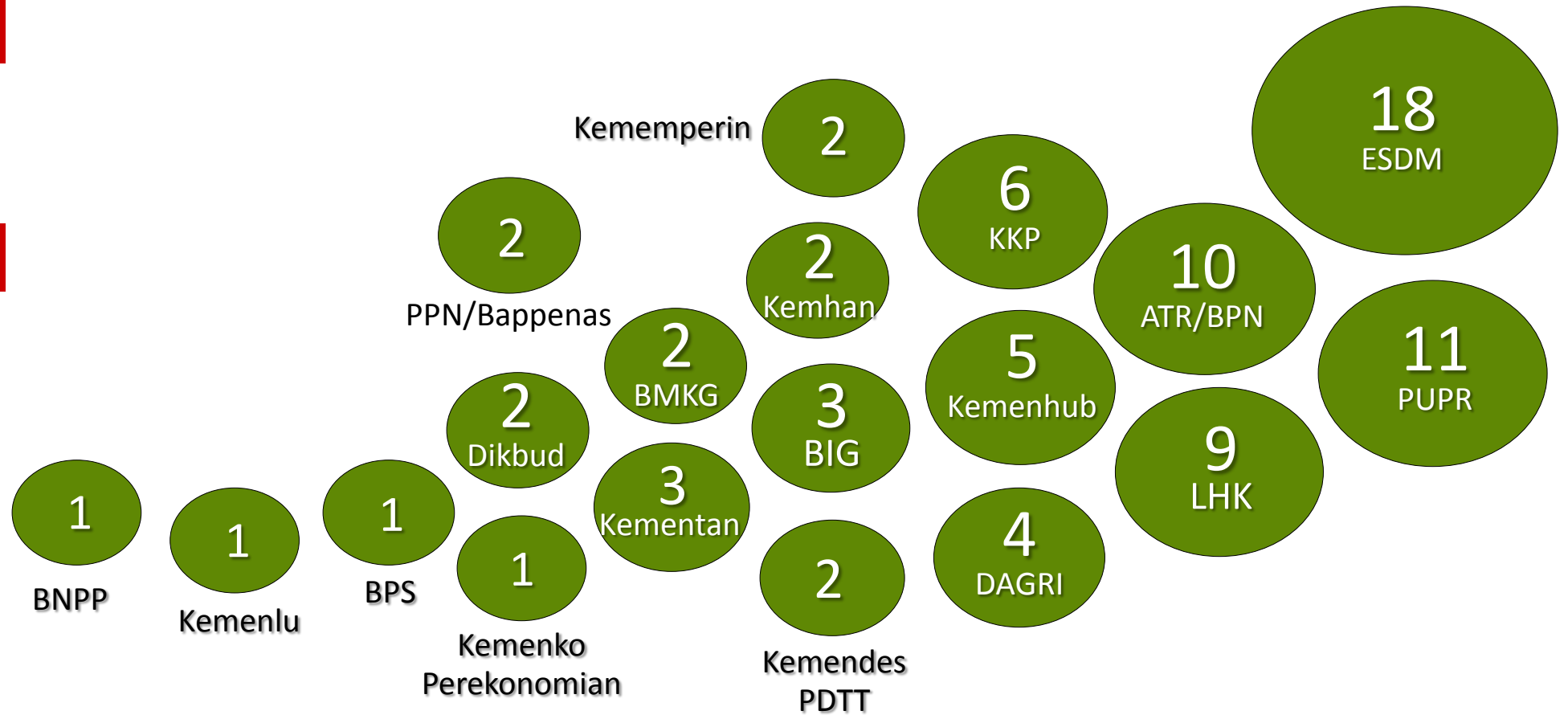
Value

- Unified National Geospatial Data and Information
- Reliable and Accountable Spatial Planning
- Reliable and Accountable Development Policy

ONE MAP POLICY

19 Ministries and 85 Thematic Maps

Involving
85
Thematic Maps



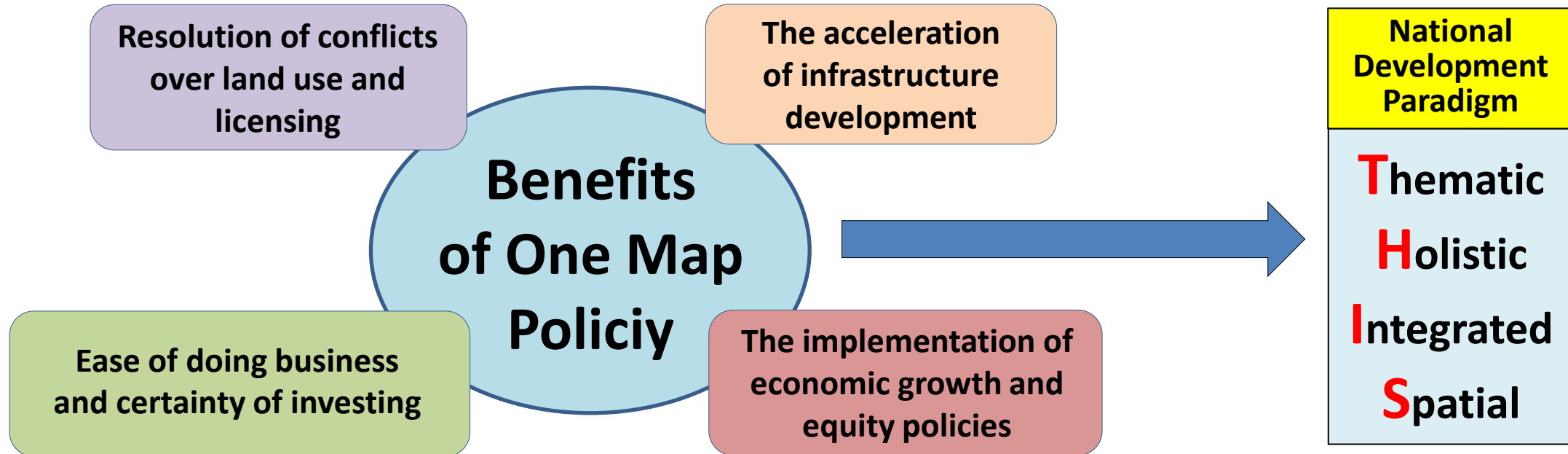
85 Thematic Maps of OMP Program

1	Peta Penetapan Kawasan Hutan (hasil Tata Batas), minimal pada skala 1:50.000	KLHK
2	Peta Izin Pemanfaatan Kawasan Hutan (IUPHHK-HA, IUPHHK-HT & IUPHHK-HK)	KLHK
3	Peta Hutan Tanaman Rakyat (HTR), minimal pada skala 1:50.000	KLHK
4	Peta Kawasan Hutan dengan Tujuan Khusus, minimal pada skala 1:50.000	KLHK
5	Peta Izin Usaha Pertambangan skala 1:50.000	ESDM
6	Peta Wilayah Kerja Migas skala 1:50.000	ESDM
7	Peta Hak Guna Usaha, minimal pada skala 1:50.000	ATR/BPN
8	Peta Hak Pengelolaan, minimal pada skala 1:50.000	ATR/BPN
9	Peta Hak Guna Bangunan, minimal pada skala 1:50.000	ATR/BPN
10	Peta Perda Tanah Ulayat, minimal pada skala 1:50.000	Kemendagri
11	Peta Izin Lokasi, minimal pada skala 1:50.000	ATR/BPN
12	Peta penetapan Kawasan Ekonomi Khusus (KEK), minimal pada skala 1:50.000	Kemenko Perekonomian
13	Peta Kawasan Industri Eksisting skala 1:50.000	Kemenperin & Kemenko Perencanaan
14	Peta Rencana Kawasan Industri skala 1:50.000	Kemenperin & Kemenko Perencanaan
15	Peta Kawasan Perdagangan Bebas dan Pelabuhan Bebas (KPBPB), minimal pada skala 1:50.000	ATR/BPN
16	Peta Persebaran Lokasi Transmigrasi skala 1:50.000	KPDT
17	Peta Persebaran Kawasan Transmigrasi skala 1:50.000	KPDT
18	Peta PP RTRWN skala 1:1.000.000	ATR/BPN
19	Peta Perda RTRW Provinsi skala 1:250.000	ATR/BPN
20	Peta Perda RTRW Kabupaten skala 1:50.000 dan Perda RTRW Kota skala 1:250.000	ATR/BPN
21	Peta Rencana Pembangunan Jangka Menengah Nasional skala 1:250.000	PPN/BAPPENAS
22	Peta RKP skala 1:250.000	PPN/BAPPENAS
23	Peta Penutup Lahan skala 1:50.000	BIG
24	Peta Perpres RTR KSN skala 1:50.000	ATR/BPN
25	Peta kawasan Wilayah Pertahanan skala 1:1.000.000	Kemenhan
26	Peta Rinci Wilayah Pertahanan skala 1:50.000	Kemenhan
27	Peta RZWP3K Provinsi skala 1:250.000	KKP
28	Peta Bagian RZWP3K skala 1:50.000	KKP
29	Peta Rencana Tata Ruang Laut Nasional skala 1:1.000.000	KKP
30	Peta Lokasi Pelabuhan perikanan skala 1:50.000	KKP
31	Peta Sebaran Pelabuhan Umum skala 1:50.000	Kemenhub
32	Peta Sebaran Pelabuhan Penyeberangan skala 1:50.000	Kemenhub
33	Peta Sebaran Terminal Khusus skala 1:50.000	Kemenhub
34	Peta Sebaran Bandara skala 1:50.000	Kemenhub
35	Peta Sebaran Jaringan Rel dan Stasiun KA skala 1:50.000	Kemenhub
36	Peta jaringan listrik skala 1:50.000	ESDM
37	Peta sebaran lokasi gardu Induk skala 1:50.000	ESDM
38	Peta lokasi Pembangkit Listrik skala 1:50.000	ESDM
39	Peta sebaran Pembangkit Listrik skala 1:50.000	ESDM
40	Peta Jaringan Pipa Migas skala 1:50.000	ESDM

41	Peta Jaringan Serat Optik, skala 1:50.000	Kemkominfo
42	Peta Jalan Nasional, Jalan Tol, Jalan Provinsi, dan Jalan Kabupaten skala 1:50.000	PUPR
43	Peta Sebaran Lokasi Tempat Pembuangan Akhir (TPA) skala 1:50.000	PUPR
44	Peta Sebaran Lokasi Instalasi Pengolahan Air Limbah (IPAL) dan Instalasi Pengolahan Air Bersih (IPAB) skala 1:50.000	PUPR
45	Peta Sebaran Lokasi SPAM skala 1:50.000	PUPR
46	Peta sebaran lokasi Bendungan skala 1:50.000	PUPR
47	Peta Daerah Irigasi Permukaan skala 1:50.000	PUPR
48	Peta Sebaran Lokasi Sabo DAM skala 1:50.000	PUPR
49	Peta Sebaran Lokasi Pengaman Pantai skala 1:50.000	PUPR
50	Peta Sebaran Lokasi Rusunawa skala 1:50.000	PUPR
51	Peta Air Tanah skala 1:50.000	PUPR
52	Peta Ketersediaan Air skala 1:250.000	PUPR
53	Peta Penggunaan Tanah skala 1:50.000	ATR/BPN
54	Peta Lahan Gambut skala 1:50.000	Kementan
55	Peta Neraca SD Hutan skala 1:250.000	KLHK
56	Peta Daerah Aliran Sungai (DAS) skala 1:50.000	KLHK
57	Peta Geologi skala 1:100.000	ESDM
58	Peta Kawasan rawan Bencana Gunung Api skala 1:50.000	ESDM
59	Peta Kawasan Rawan Bencana Gempa Bumi skala 1:50.000	ESDM
60	Peta Kawasan Rawan Bencana Zona Kerentanan Gerakan Tanah skala 1:50.000	ESDM
61	Peta Kawasan Rawan Bencana Tsunami skala 1:50.000	ESDM
62	Peta Hidrogeologi skala 1:100.000	ESDM
63	Peta Tanah Semi-detail skala 1:50.000	Kementan
64	Peta Curah Hujan dan Hari Hujan skala 1:50.000	BMKG
65	Peta Potensi Energi Matahari dan Angin skala 1:250.000	BMKG
66	Peta Lahan Sawah skala 1:50.000	ATR/BPN
66	Peta Lahan Sawah skala 1:50.000	Kementan
67	Peta Wilayah Pengelolaan Perikanan Negara Republik Indonesia (WPPNRI) 1	KKP
68	Peta Jenis dan Kekayaan Perikanan tangkap di WPPNRI skala 1:250.000	KKP
69	Peta Kawasan Bentang Alam Karst skala 1:50.000	ESDM
70	Peta Sumberdaya Mineral skala 1:50.000	ESDM
71	Peta Sumberdaya Batubara skala 1:50.000	ESDM
72	Peta Sumberdaya Panasbumi skala 1:50.000	ESDM
73	Peta Sistem Lahan (Morfologi) skala 1:50.000	BIG
74	Peta Morfometri Bentang Lahan skala 1: 50.000	BIG
75	Peta Batas Administrasi Provinsi skala 1:50.000	Kemendagri
76	Peta Batas Administrasi Kabupaten/Kota skala 1:50.000	Kemendagri
77	Peta Batas Administrasi Desa/kelurahan skala 1:10.000	Kemendagri
78	Peta Batas Darat Negara skala 1:25.000	Kemenlu & BNPP
79	Peta Batas Laut Negara skala 1:1.000.000	Kemenlu
80	Peta Potensi Desa (sosial-ekonomi), minimal pada skala 1:50.000	BPS
81	Peta kawasan Cagar Budaya skala 1:50.000	Kemendikbud
82	Peta Sebaran Lokasi Cagar Budaya, skala 1:50.000	Kemendikbud
83	Peta Penunjukkan Kawasan Hutan skala 1:250.000	KLHK
84	Peta Zonasi Kawasan Konservasi skala 1:50.000	KLHK
85	Peta Zonasi Kawasan Konservasi Perairan skala 1:50.000	KLHK dan KKP

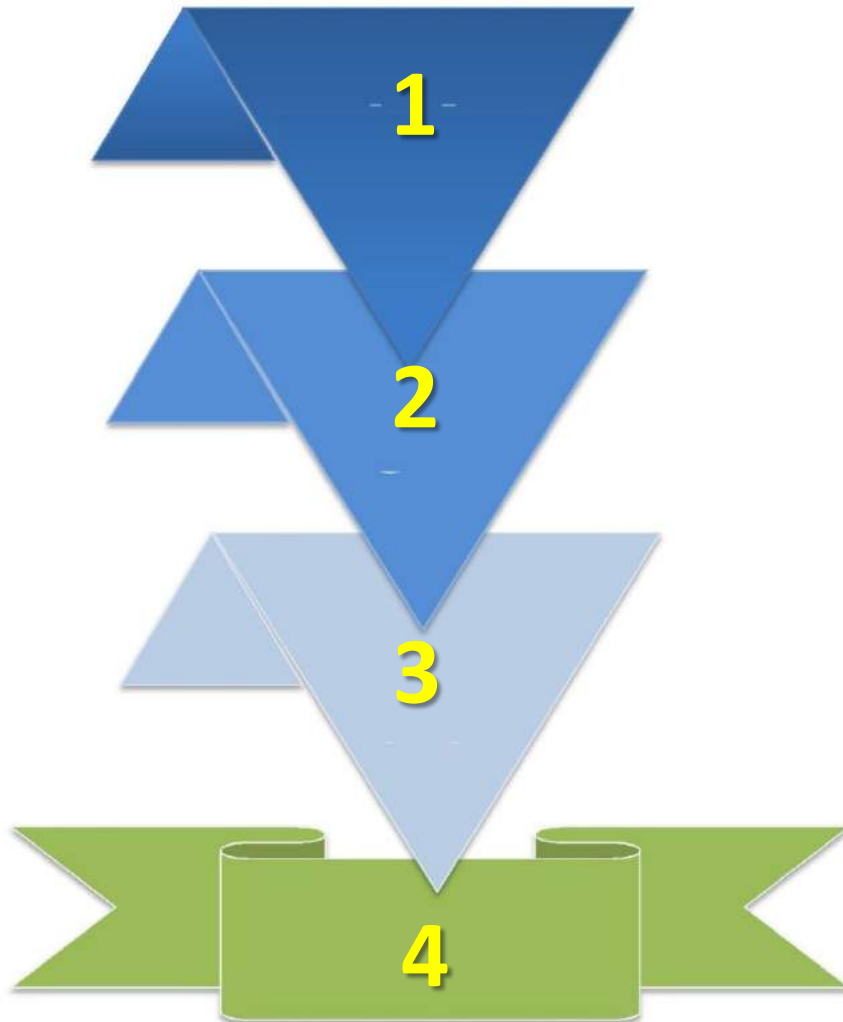


Benefits of One Map Policy for Sustainable Development



- Supporting national sustainable development planning.
- Supporting the implementation of “THIS” national development paradigm
- Supporting sustainable natural resource management
- Prevention of corruption related to natural resources management

Steps of One Map Policy Activity



COMPILATION

Thematic data collection from Ministries/Agencies as a data producer (Custodianship) .

INTEGRATION

Thematic data integration processes which refer to national standard base map produced by BIG .

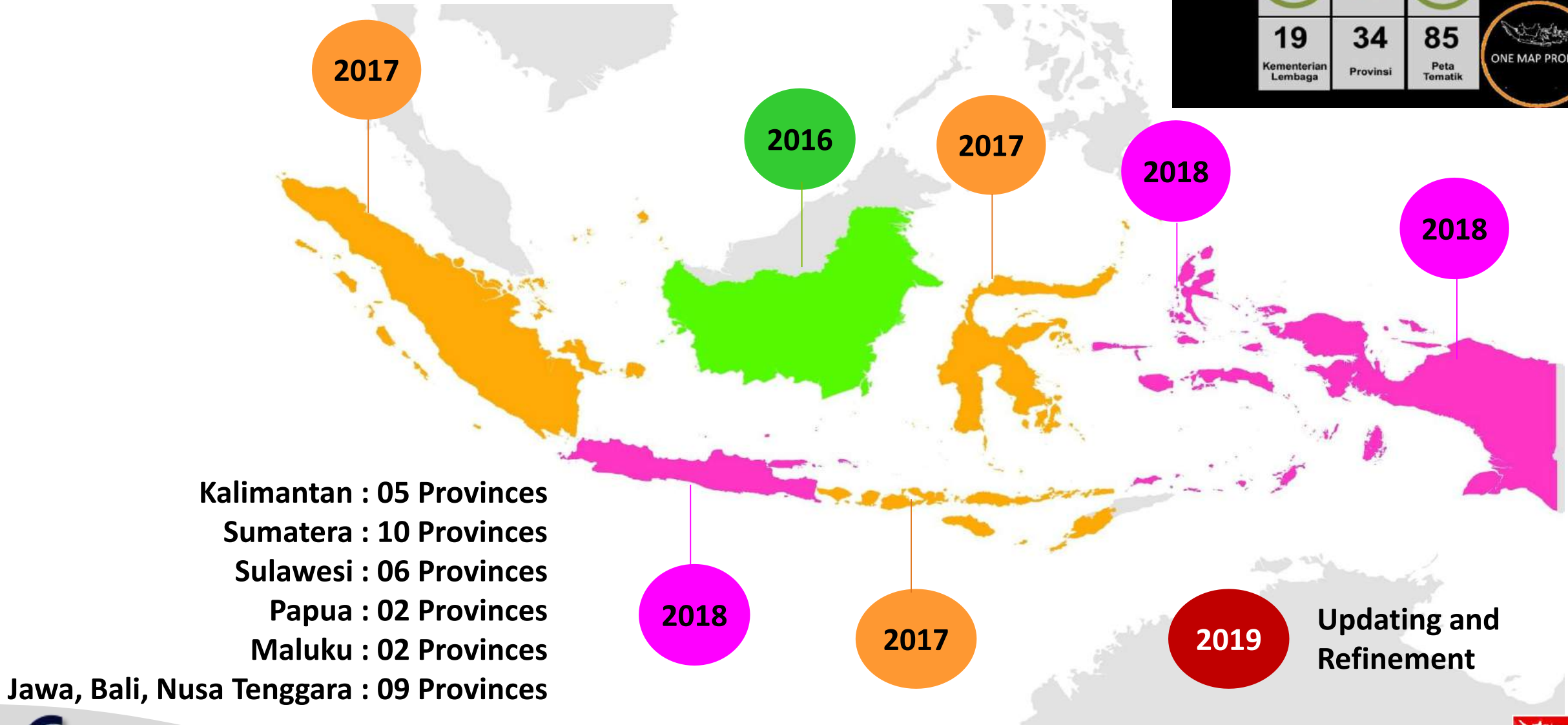
SYNCRONIZATION

To synchronize thematic data among ministries/agencies which include to solve land use conflict.

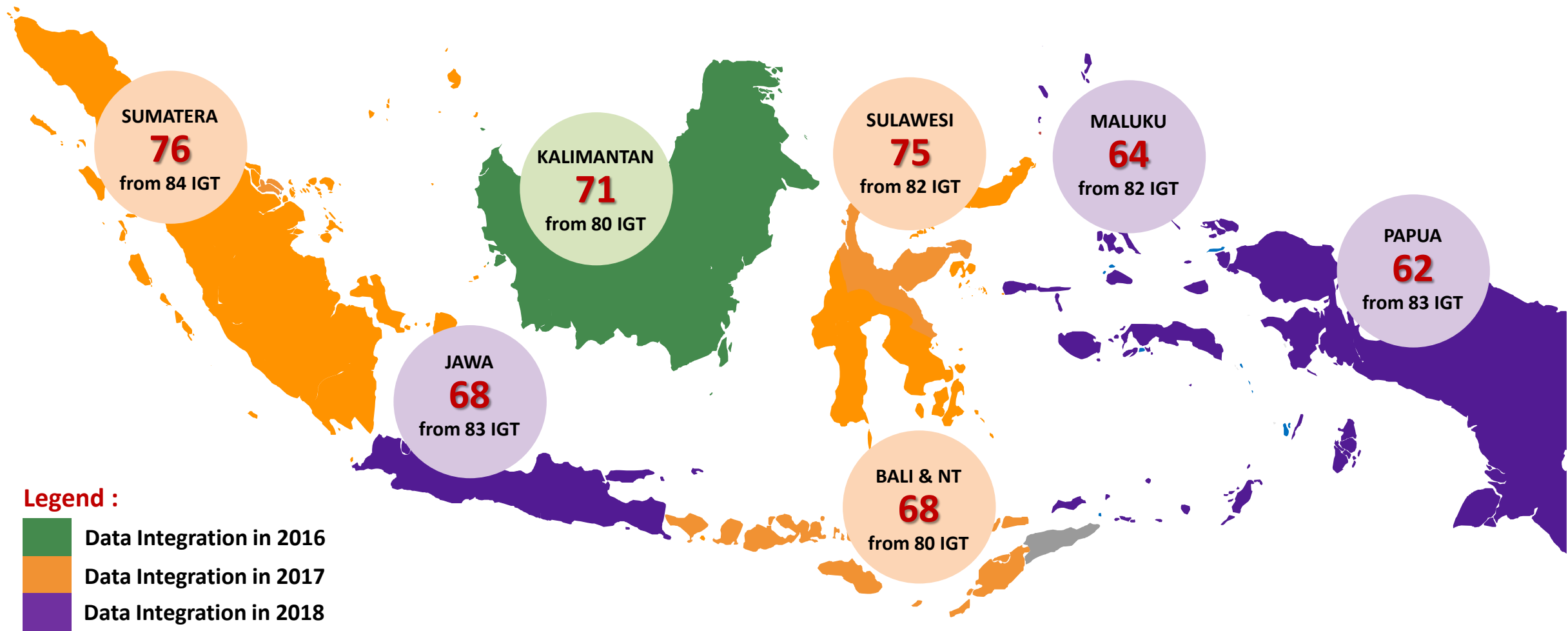
DATA SHARING

Product of one map will be shared through InaGeoportal to ministries/agencies involved.

Priority Areas of One Map Policy (2016-2019)

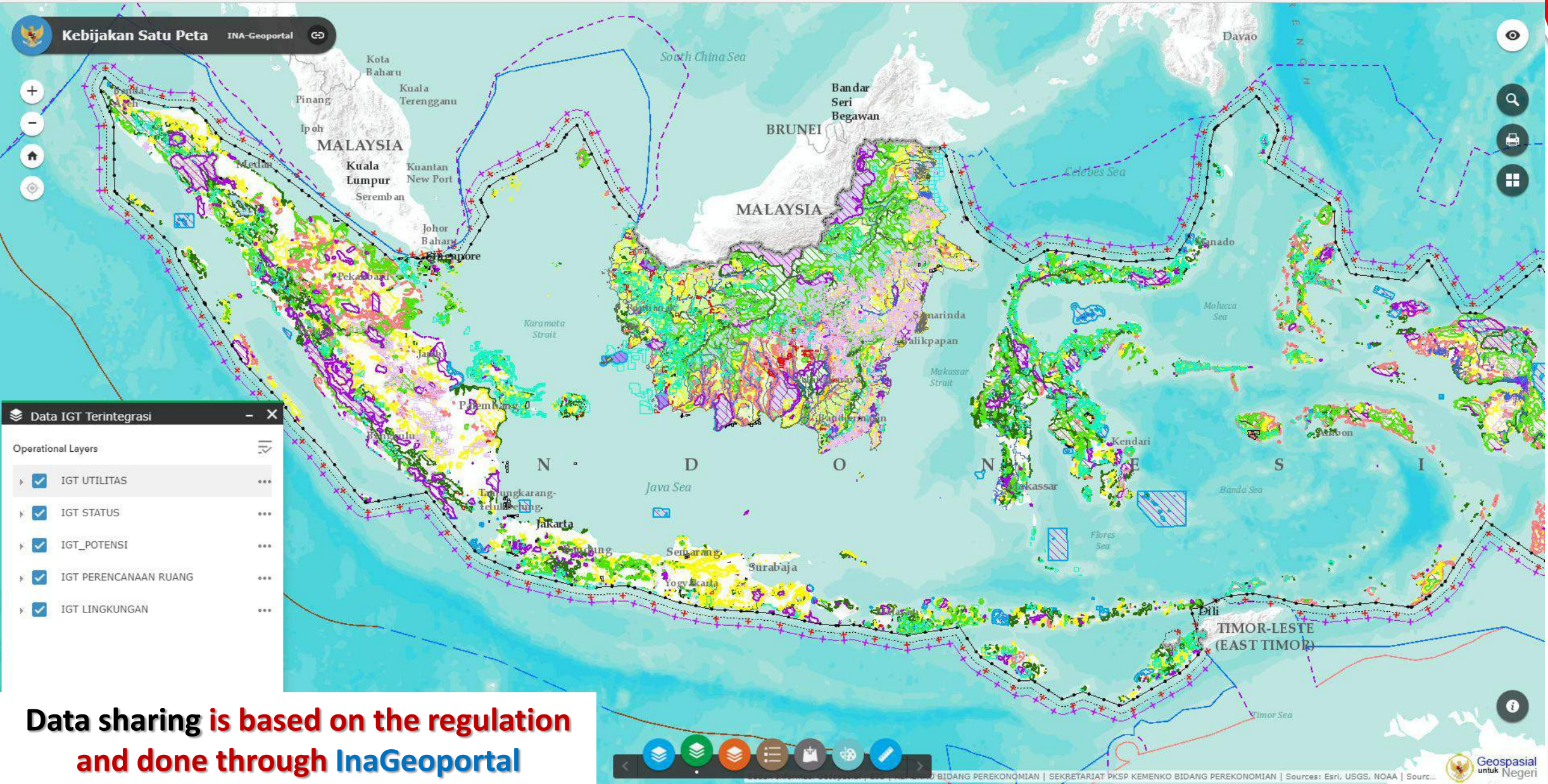


Status of One Map Policy (OMP) Data Integration (July 2018)



The Geoportal of One Map Policy will be officially launched by the Indonesian President on Nov. 2018

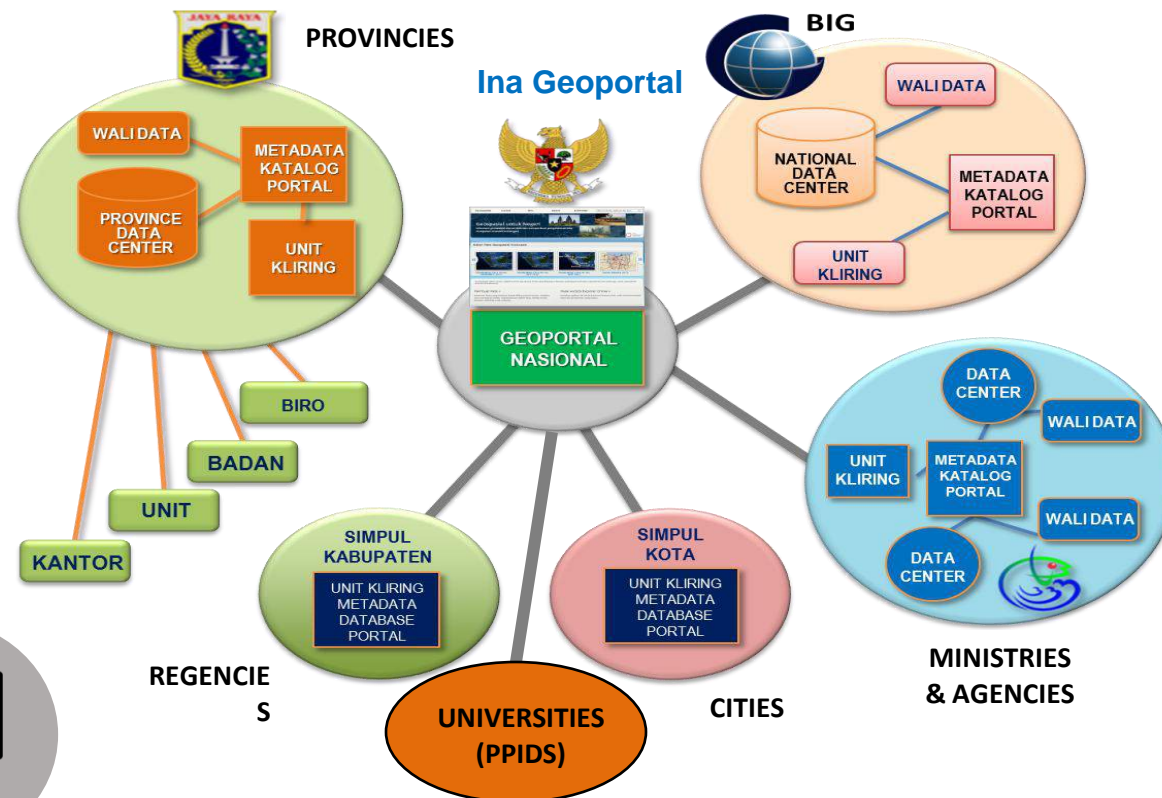
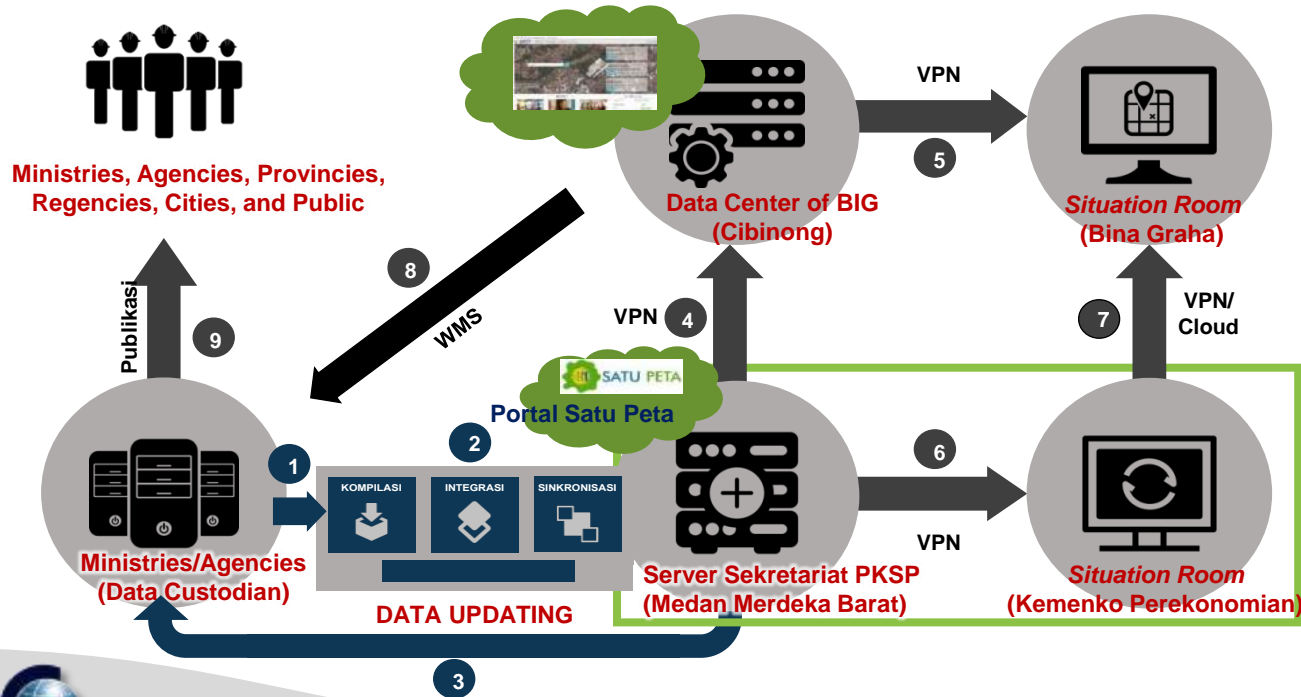
OMP Results is housed in InaGeoportal BIG



Data sharing is based on the regulation and done through InaGeoportal

National Geospatial Information Network (NGIN)

Ina Geoportal



Status of NGIN Nodes

	TARGET	CONNECTED
Ministries/Agencies	57	23
Provinces	34	34
Regencies/Cities	514	22
Universities	34	19

Ina-GeoPortal : National Geospatial Information Network, <http://tanahair.indonesia.go.id>

Geospasial untuk Negeri

Cari: Semua Kategori

Beranda Ina-Geoportal Download Konten Statistik

Kebijakan Satu Peta

Info portal Kebijakan Satu Peta Agustus 2018 | BIG meluncurkan atlas mudik 2018 yang dapat diunduh di sini. | Bagi pengguna yang mengalami kendala pada saat menggunakan Aplikasi Ina-Geoportal, Anda dapat menghubungi email helpdesk.nsd@big.go.id | Pengguna yang mengalami kendala pada saat l

Gedung Sate Bandung dan sekitarnya - CSRT Ortho.

Ina-Geoportal sebagai geoportal nasional yang menghubungkan berbagai Kementerian, Lembaga, Provinsi, dan Daerah yang menjadi mitra penghubung simpul Jaringan Informasi Geospasial Nasional (JIGN). Kini pengguna dapat menikmati fitur analisis data, geoprocessing, geotagging, drag and drop data file dengan teknologi mapviewer berbasis opensource.

Peta AOI Download

Peta Per Wilayah Download

DEM Nasional Download

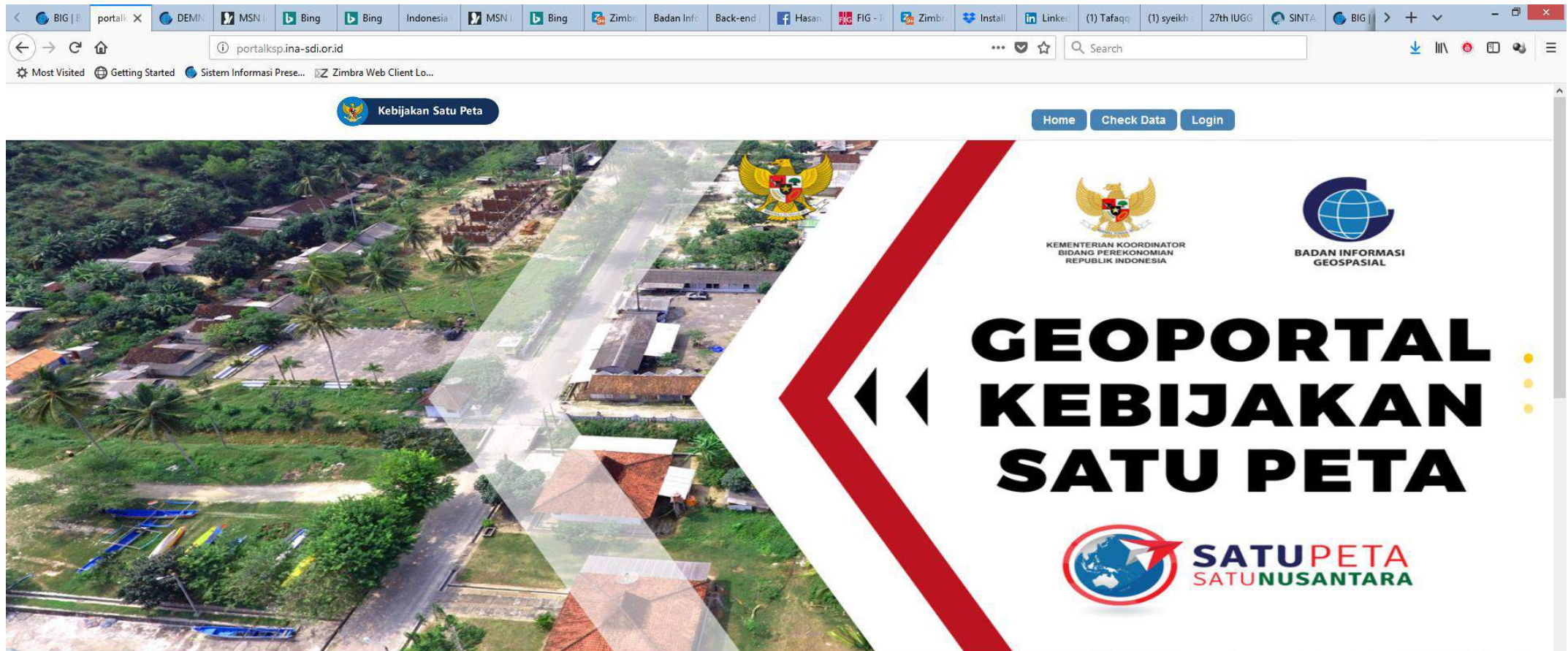
Peta KSP Download

Link to OMP Geoportal

Ina-Geoportal Web Apps Lihat Semua >

Rekomendasi Populer Terbaru Bencana BIG

OMP-Geoportal inside InaGeoportal, <http://portalksp.ina-sdi.or.id/>



85 Peta Tematik

Peta tematik dalam Pelaksanaan Kebijakan Satu Peta mencakup 7 (tujuh) tema, yaitu batas wilayah, kehutanan, perencanaan ruang, sarana prasarana, perizinan dan pertanahan, sumber daya alam dan lingkungan, kawasan khusus dan transmigrasi. Ketujuh tema tersebut tersebar di 34 Provinsi yang menjadi kewenangan 19 (sembilan belas) Kementerian/Lembaga yang terlibat sebagai Walidata IGT

OMP-Geoportal is only available for OMP stakeholders, and governed by data sharing protocol.

InaGeoportal
is connected
to the network
nodes of
Ministries,
Agencies,
Provinces,
Districts



tanahair.indonesia.go.id/portal-web

Cari Simpul Jaringan

83 Simpul Jaringan

Simpul Jaringan	Status
Badan Pertanahan Nasional	Tersambung
Badan Pusat Statistik	Tersambung
Badan SAR Nasional	Gagal
Bali	Tersambung
Banten	Tersambung
Banyuwangi	Tersambung

* Terakhir kali update 2 jam yang lalu

Data Terbanyak | Data Terbaru

Logo	Nama	Metadata
	Aceh	433
	Jambi	349
	Sulawesi Selatan	229
	Sulawesi Tengah	200

*Data yang di tampilkan menggunakan sistem CSV

Ina-Geoportal Berita

[Lihat Semua >](#)

Atlas Mudik 2018
Rabu 30 Mei 2018, 10:50
Baca atlasnya, pilih jalurnya, sampailah kita ke kampung halaman tercinta...

[Selengkapnya...](#)

Jokowi Resmikan Portal Kebijakan Satu Peta Agustus 2018
Kamis 22 Maret 2018, 09:10
Menteri Koordinator Bidang Perekonomian Darmin Nasution meminta kepada setiap Kementerian dan Lembaga (K/L) daerah maupun pusat untuk bisa secepatnya mengintegrasikan semua data dalam kebijakan satu peta pada pertengahan Juni 2018....

[Selengkapnya...](#)

Username:

Password:

[Lupa password?](#)

[Masuk](#)

Mengapa login tidak berhasil?
Rabu 31 Januari 2018, 05:39
Beberapa hari terakhir ini, e-mail yang masuk ke helpdesk menanyakan tentang kendala terkait login ke Aplikasi Ina-Geoportal...

[Selengkapnya...](#)

Sinergi untuk Meningkatkan Layanan pada Aplikasi Ina-Geoportal
Sabtu 27 Januari 2018, 17:15
Di awal tahun 2018, saat yang tepat untuk melakukan perubahan dan perbaikan ke arah yang lebih baik. Badan Informasi Geospasial dengan fungsinya PSJ berusaha untuk terus memberikan layanan terbaiknya....

[Selengkapnya...](#)

**Number of
Geospatial
Information
Metadata**

Ina-Geoportal

Ina-Geoportal sebagai geoportal nasional yang menghubungkan berbagai Kementerian, Lembaga, Provinsi, dan Daerah yang menjadi mitra penghubung simpul Jaringan Informasi Geospasial Nasional (IJGN). Kini pengguna dapat menikmati fitur analisis data, geoprocessing, geotagging, drag and drop data file dengan teknologi mapviewer berbasis opensource.

Navigasi

Menu Utama

- Beranda
- Ina-Geoportal
- Statistik

Konten

- Metadata
- Web Apps
- Web Maps
- Berita
- Dokumen

Kontak

Pusat Pengelolaan dan Penyebarluasan Informasi Geospasial
Badan Informasi Geospasial (BIG)
Jl. Raya Jakarta - Bogor KM. 46
Cibinong 16911, INDONESIA

☎ 021-8753155
📠 021-87908988



Status of Network Nodes of Ministry/Agency

August 2018 Status

 **8** ALREADY OPERATIONAL

 **10** ALREADY OPERATIONAL BUT NOT YET OPTIMAL*

 **1** NOT YET OPERATIONAL **

 Kementerian LHK	 Kemenko Perekonomian
 Kementerian ESDM	 Kementerian ATR/BPN
 Kementerian PUPR	 BIG
 Kementerian Pertanian	 BMKG

Already connected to NIGN and has supporting regulation

 Kementerian Kelautan dan Perikanan	 Kementerian Kominfo
 Kementerian Perhubungan	 Kementerian Dalam Negeri
 Kementerian Luar Negeri	 Kementerian Dikbud
 Kementerian Desa, PDT, dan Transmigrasi	 Kementerian Perindustrian
 BPS	 Kementerian PPN/Bappenas

** Already connected to NIGN but no supporting regulation yet*

 Kementerian Pertahanan
--

*** Not yet connected to NIGN but has supporting regulation*

Status of Network Nodes of Provinces

August 2018 Status



15 ALREADY OPERATIONAL



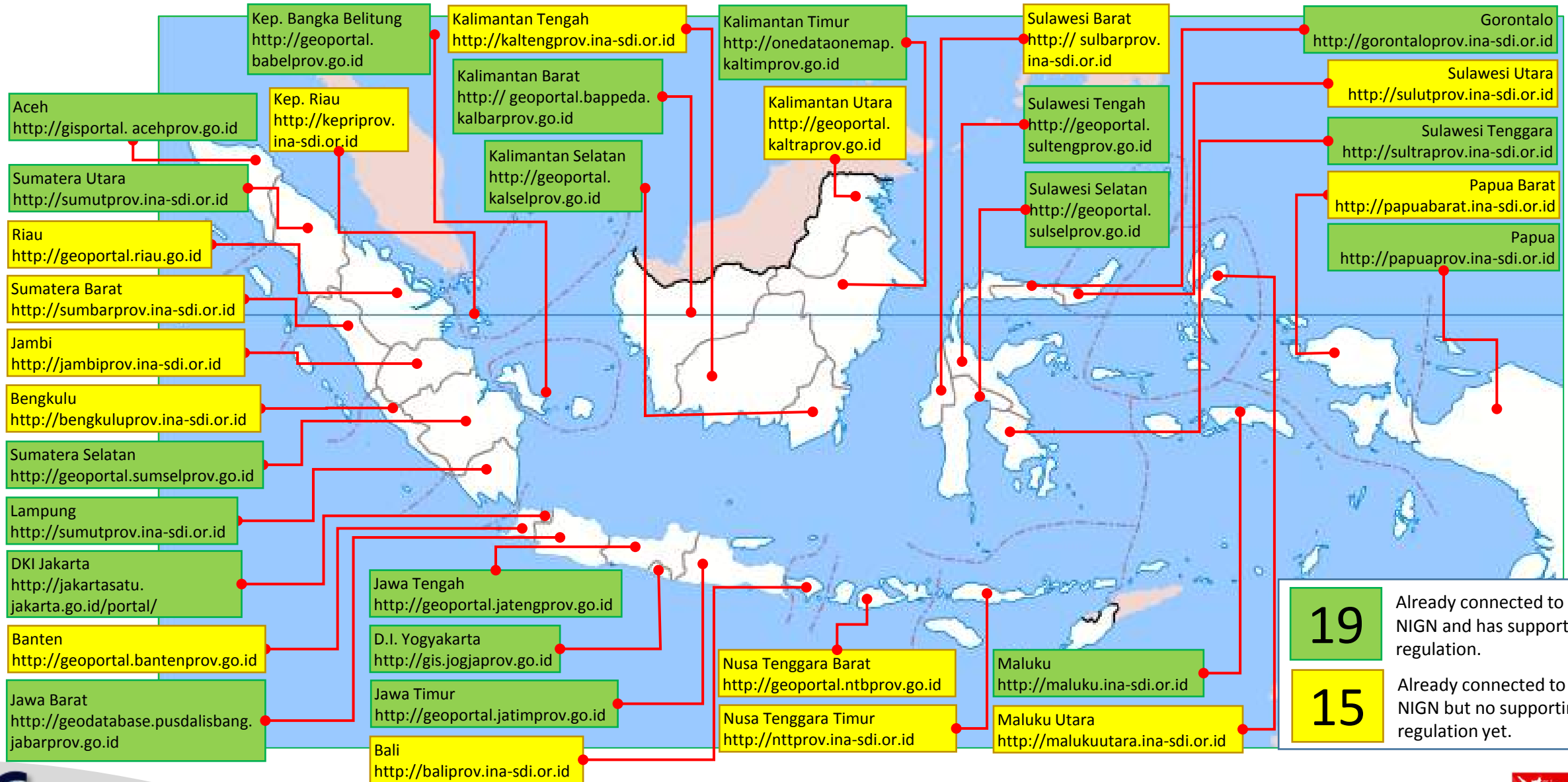
19 ALREADY OPERATIONAL BUT NOT YET OPTIMAL*



** Already connected to NIGN
but no supporting regulation yet*

Ref. Kemenko Perekonomian (Agt. 2018)

Geoportal Address of Provinces (August 2018)



19 Already connected to NIGN and has supporting regulation.

15 Already connected to NIGN but no supporting regulation yet.

Closing Remark (1): OMP and Sustainable Development

NSDI : NATIONAL SPATIAL DATA INFRASTRUCTURE

- Presidential Decree No. 27/ 2014 (NSDI)

GEOSPATIAL DATA PRODUCTION

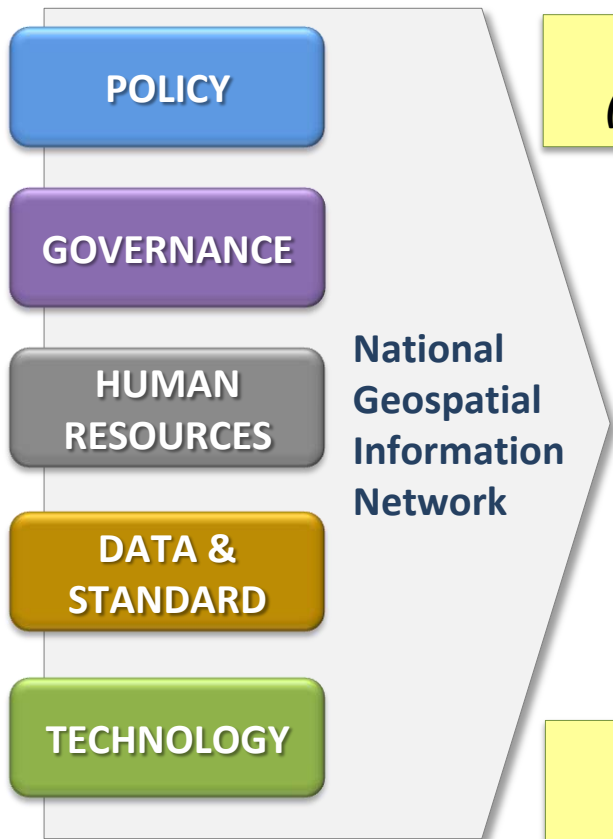
Geospatial Information Law No. 4 / 2011

ONE MAP POLICY Coordination & Supervision

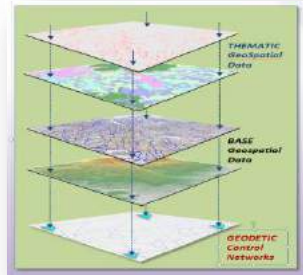
Presidential Regulation No. 9 / 2016
Acceleration of OMP Implementation

GEOSPATIAL INFORMATION UTILIZATION & MODELING

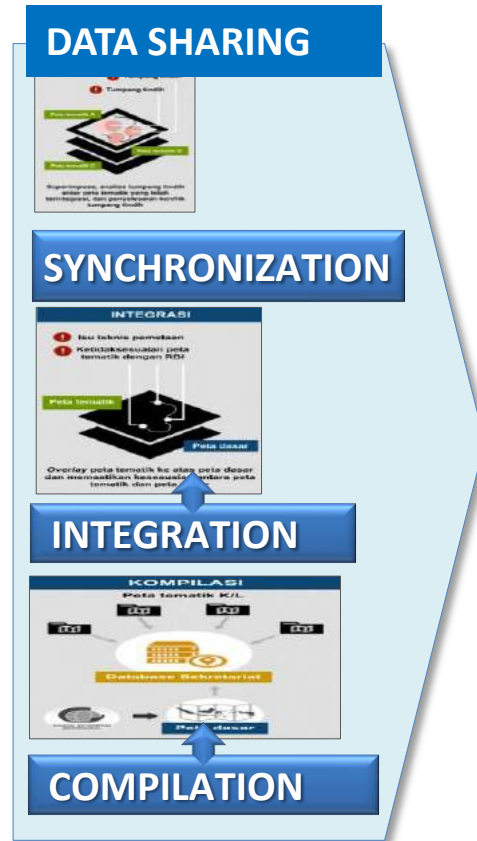
National Planning Law



STATISTIC DATA (Social and Economy)



GEOSPATIAL INFORMATION



SD Planning

By integrating multi sectors, product of one map will be used for developing or for updating district spatial planning which contributes to sustainable development

National Sustainable Development Program



Harmony With Nature: Social-Economic Environment

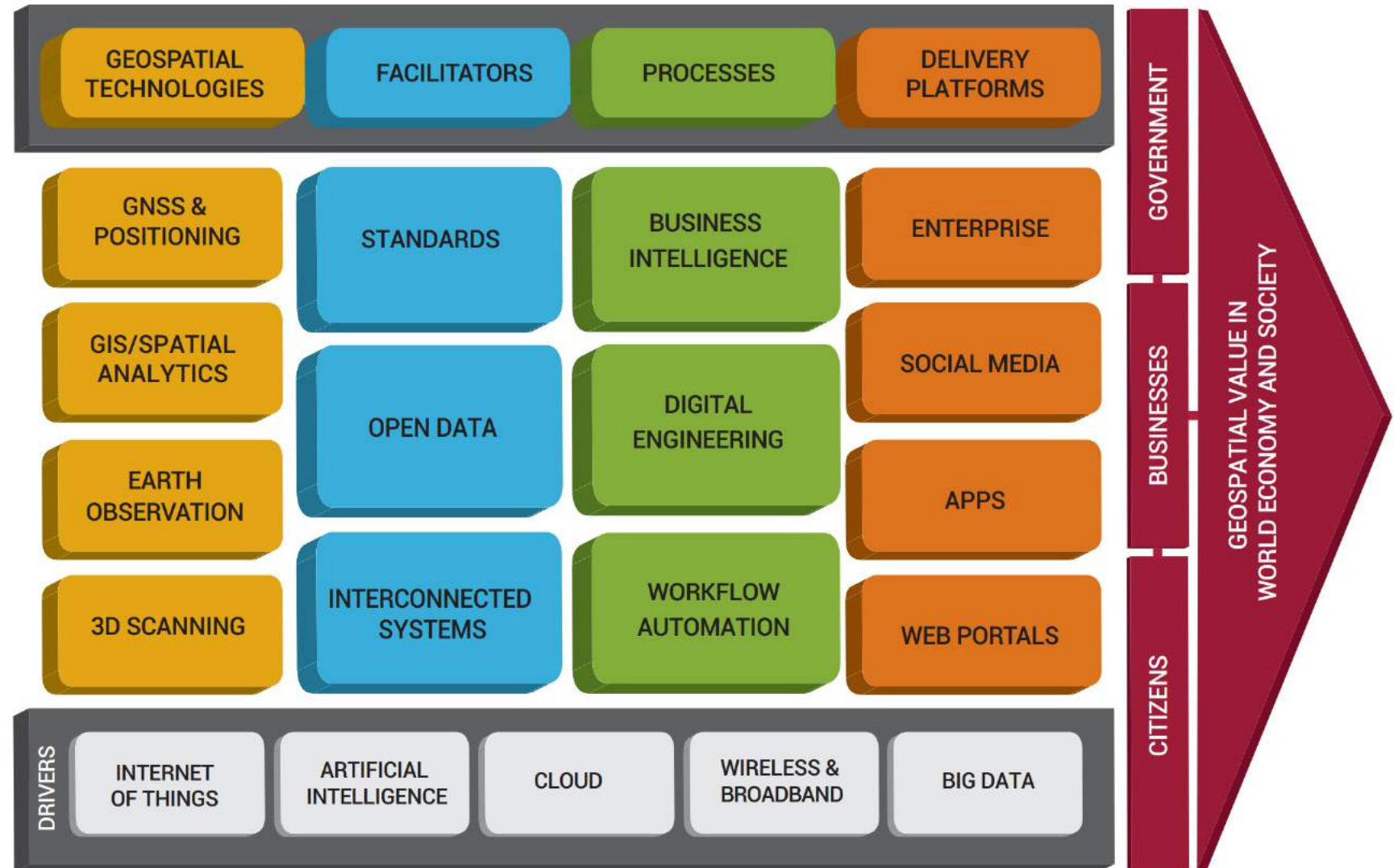
Closing Remark (2)

- ✓ **Geoportal** housing OMP data will be launched on November 2018. The **synchronization** stage is continuing.
- ✓ **Data Sharing** of OMP data is based on regulation.
- ✓ **The National Geospatial Information Network** is being completed to support data sharing of OMP data.
- ✓ **Several issues for OMP continuation:**

- | | |
|---|--|
| • Utilization of OMP Data in Decision Making Process of Central and Local Governments | |
| • Toward Larger Scale of 1:5.000 | • Human Resource Development |
| • Inclusion of other Thematic Maps | • Institutional and Policy Enhancement |
| • Adding more Stakeholders, e.g. NGO and Private Sector | |

Closing Remark (3)

One Map Policy
and **InaGeoportal**
should consider
new developments
in the geospatial
digital ecosystem



Ref: Geospatial Media and Communications, 2018

Closing Remark (4)

One Map Policy should be integrated with other data-related government initiatives.





THANK YOU

6.490°S 106.849°E



KADAM INFORMASI
IBONPANGAI

KERJA 5 As (KERAS, CERDAS, TUNTAS, MAWAS, IKHLAS)